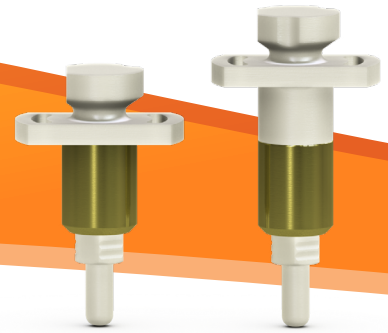


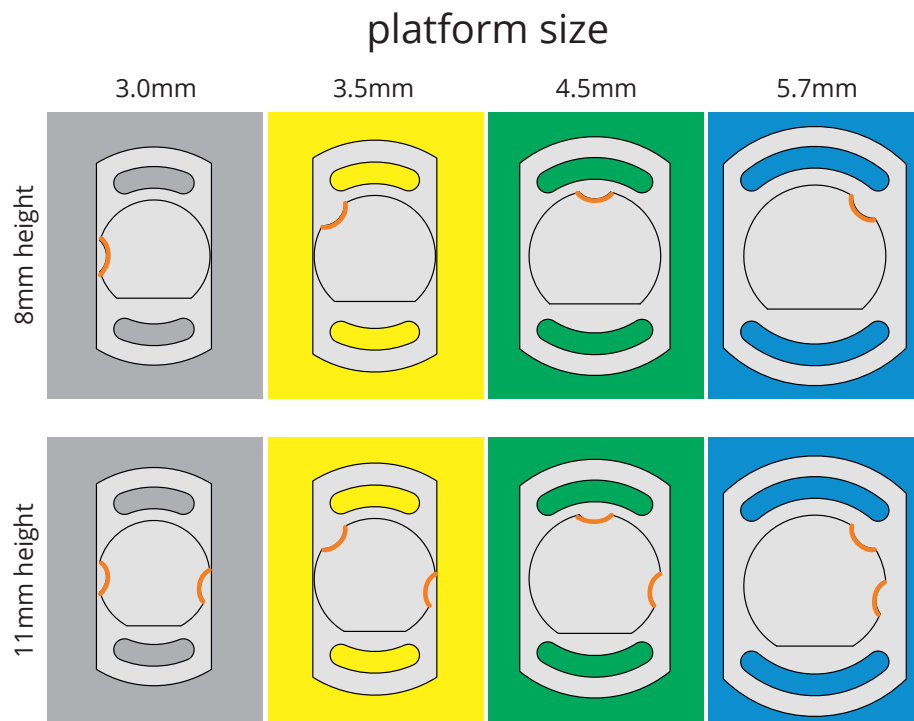
Snap Scan Bodies



BioHorizons Snap Scan bodies are designed to be used for digital or traditional impressions. The one-piece design can be placed by hand without any additional instrumentation. Each Snap Scan body features a color-coded radiopaque titanium body that can be used to verify seating on a radiograph. Unique markings on each Snap Scan body help to identify the implant platform when scanning in the mouth or with table-top scanners. Available in both 8mm and 11mm heights, to accommodate varying tissue heights.

easy identification

- Each Snap Scan body is designed with a unique top for easy identification from the occlusal view.
- 8mm Snap Scan bodies feature a single notch, 11mm Snap Scan bodies feature two notches.
- For step by step impression techniques see the prosthetic technique manual at BioHorizons.com



customer care: [888.246.8338](tel:888.246.8338)
shop online at store.biohorizons.com

SPMP19220 REV B AUG 2022

BIOHORIZONS®

Snap Scan Bodies

Ordering Information

8mm height	11mm height	
TP3SSB8	TP3SSB11	3.0mm platform
PYSSB8	PYSSB11	3.5mm platform
PGSSB8	PGSSB11	4.5mm platform
PBSSB8	PBSSB11	5.7mm platform



8mm height



11mm height

BioHorizons® is a registered trademark of BioHorizons. Not all products are available in all countries. ©BioHorizons. All Rights Reserved.