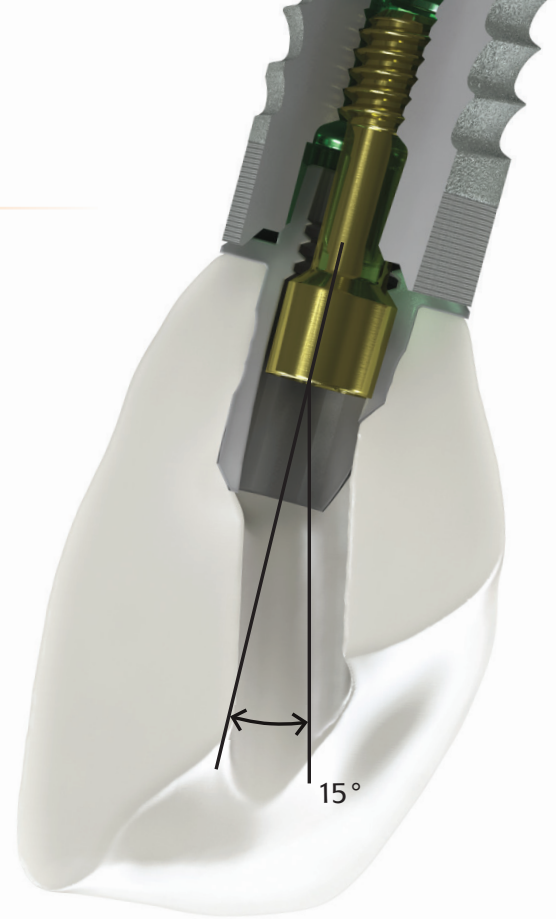


Angled Screw Channel

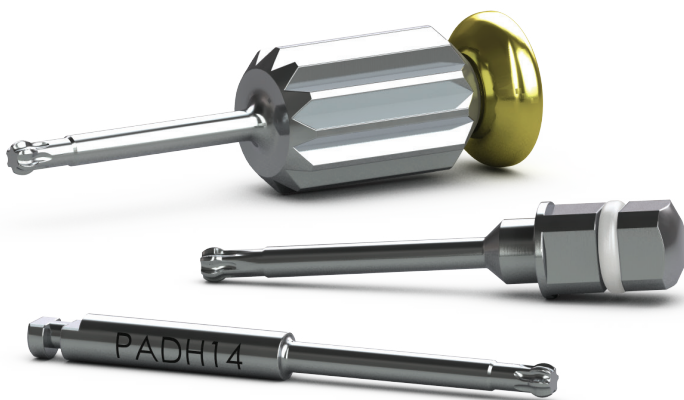
Esthetic results are vital for treatment success. BioHorizons Precision Angled Screw provides up to 15° of angle correction, placing the screw access channel and implant in the ideal position.

The unique design allows the screw to be driven at an angle while maintaining a narrow screw access channel and final torque value of 30Ncm.

To design a Precision Angled Screw restoration, a BioHorizons scan body must be used and the BioHorizons CAD/CAM Abutments & Model library must be downloaded from the Vulcan website.



Download the digital library from www.vulcandental.com.



BIOHORIZONS®

Precision Angled Driver

PADM14	Manual Driver
PADH14	Handpiece Driver
PADS14	4mm Square Driver
PADS19	4mm Square Driver, Long

Use with PXPAS for angled screw access from 0° to 15°.



Precision Angled Screw

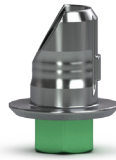
PXPAS	Precision Angled Screw
-------	------------------------

For use with the Hybrid Base Abutment and Precision Angled Driver. Titanium Alloy. Final torque: 30 Ncm.



Hybrid Base Abutments

TP3HYB	3.0mm platform, hexed
PYHYB	3.5mm platform, hexed
PGHYB	4.5mm platform, hexed
PBHYB	5.7mm platform, hexed

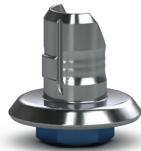


TP3HYBN	3.0mm platform, non-hexed
PYHYBN	3.5mm platform, non-hexed
PGHYBN	4.5mm platform, non-hexed
PBHYBN	5.7mm platform, non-hexed



Tissue Level Hybrid Base Abutments

SYHYB	3.5mm platform, hexed
SGHYB	4.5mm platform, hexed
SBHYB	5.7mm platform, hexed



For more information, contact your local Territory Manager or call Customer Care: **1.888.246.8338**
Order 24/7 at store.biohorizons.com



L02057



REV A JUL 2019