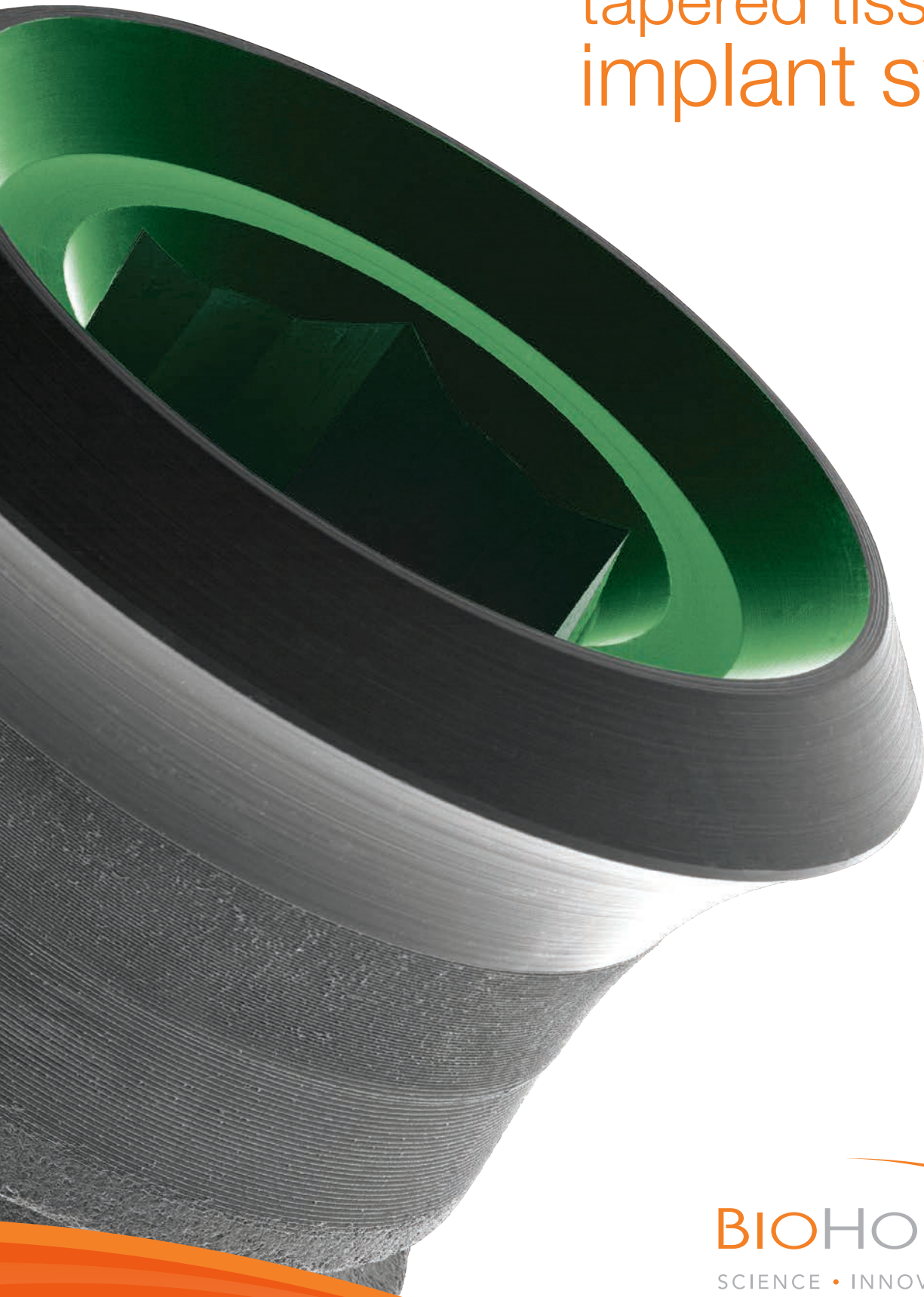


tapered tissue level implant system



BIOHORIZONS[®]

SCIENCE • INNOVATION • SERVICE

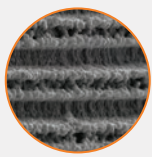
99%
average
implant
success
rate¹



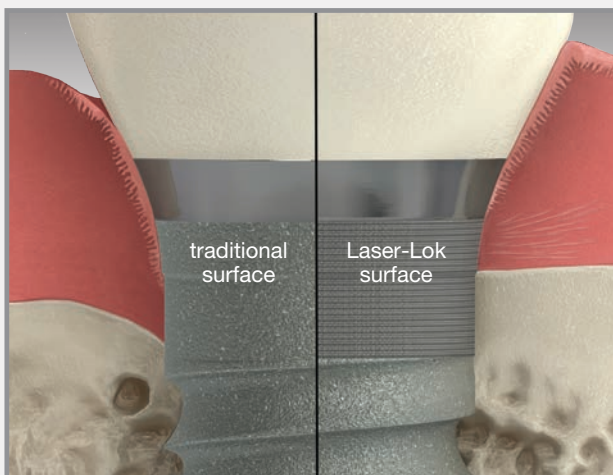
BioHorizons is committed to developing evidence-based and scientifically proven products. This commitment started with the launch of the Maestro implant system in 1997 and remains in full force today with our most recent launches, the Tapered Pro family and Snap Scan Bodies.

The focus of BioHorizons on science, innovation and service enables our customers to confidently use our comprehensive portfolio of dental implants, prosthetics, biologics products and digital solutions making BioHorizons one of the fastest growing companies in the dental industry.

BioHorizons helps customers restore smiles in 90 countries throughout North America, Europe, South America, Asia, Africa and Australia.



Laser-Lok® microchannels better science, better implants



- over 25 years of *in vitro*, animal and human studies at leading universities¹
- reduced incidence of peri-implantitis compared to traditional surfaces²
- only surface shown to attract a physical, connective tissue attachment³⁻¹¹
- 3 year follow-up showing no significant changes in crestal bone level, probing depths, and implant-gingival unit stability from time of surgery¹²

learn more at
laser-lok.com

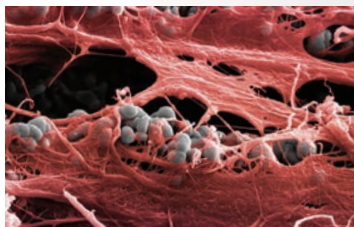
table of contents

tapered tissue level implants	3-4
tapered HD surgical kit	5
individual kit components	6-8
ancillary instruments	9-11
guided surgery kit overview	11
healing abutments & impression components	12
impression & scanning components	13
temporary abutments	14
custom & CAD/CAM abutments	15-16
esthetic & cementable abutments	17
multi-unit abutments & components	18-21
OD Secure abutments & components	22-23
Locator abutments & components	24-25
Locator R-Tx abutments & components	26
ball abutments & components	27-28
prosthetic instrumentation	29-30
prosthetic platform identification	31
references	32
ordering & warranty information	34

product information & ordering

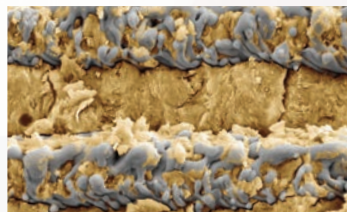
connective tissue attachment

creates a connective tissue attachment and supports per-implant health



bone retention

Laser-Lok® microchannels retain crestal bone



buttress threads

have a wide, flat leading edge for axial load distribution and primary stability



restorative ease

conical internal hex connection is color-coded for quick identification and component matching










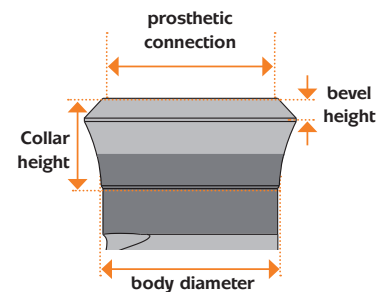
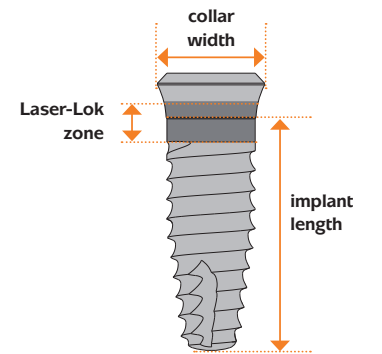


reestablish the biologic seal

Tapered Tissue Level implants feature a 2.0mm transmucosal collar for one stage procedures and Laser-Lok surface technology to inhibit epithelial downgrowth, attach connective tissue and create a biologic seal around the implant. Tapered Tissue Level implants are available in 4 diameters including the only 3mm tissue level implants currently available for tight spaces.[†]

Tapered Tissue Level Implants

				
body diameter	3.0mm	3.8mm	4.6mm	5.8mm
prosthetic connection	 3.5mm	 3.5mm	 4.5mm	 5.7mm
Laser-Lok zone	2.0mm	2.0mm	2.0mm	2.0mm
apical diameter	2.0mm	2.8mm	3.1mm	3.9mm
collar height	2.3mm	2.3mm	2.3mm	2.3mm
bevel height	0.5mm	0.5mm	0.5mm	0.5mm
max collar width	4.5mm	4.5mm	5.5mm	6.7mm
7.5mm length	—	TPLY3807	TTLG4607	TTLB5807
9.0mm length	—	TPLY3809	TTLG4609	TTLB5809
10.5mm length	TPLY3010	TPLY3810	TTLG4610	TTLB5810
12.0mm length	TPLY3012	TPLY3812	TTLG4612	TTLB5812



Laser-Lok collar with Resorbable Blast Texturing (RBT) on implant body. Packaged mount-free for quick placement and maximum site visibility. Comes packaged with a Cover Cap. Titanium Alloy (Ti-6Al-4V ELI).

[†] Based on research of competitive data. Thread major is 3.0mm.

Tapered HD Surgical Kit

TSK4000

Tapered HD Surgical Kit

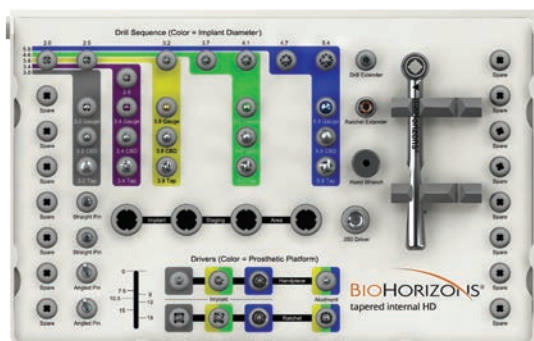
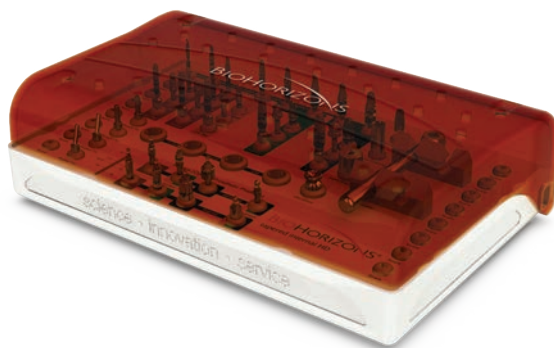
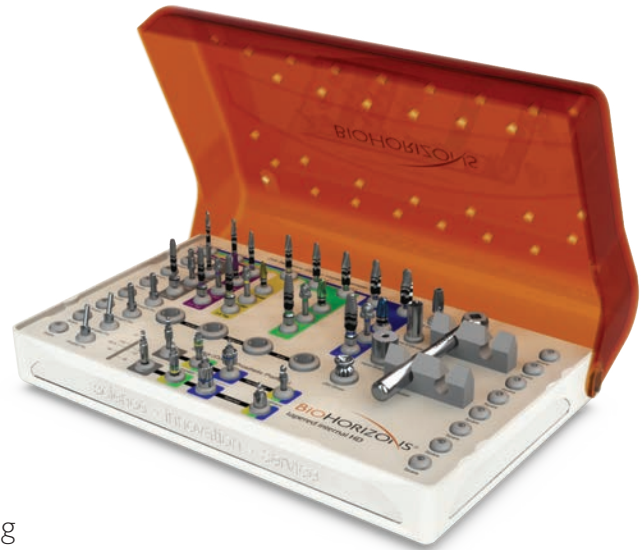
Includes the instrumentation required to place:
Tapered Pro, Tapered Plus, Tapered 3.0, Tapered Tissue Level
and Tapered Internal implants.

TSK3500

Tapered HD Surgical Kit (without instruments)

features:

- versatile, removable, hinged lid
- 40% smaller and 40% lighter than other kits
- easy to disassemble and assemble during cleaning
- implant staging area for implant vials during surgery
- use to place Tapered Pro, Tapered Internal, Plus, 3.0 and Tissue Level
- empty spare slots for other instrumentation such as stop drills or extended shank drills



The surgical kit features an intuitive color-coded layout that guides the surgeon through the instrument sequence. The drilling section is color-coded by implant diameter. The implant driver section is color-coded by prosthetic connection.

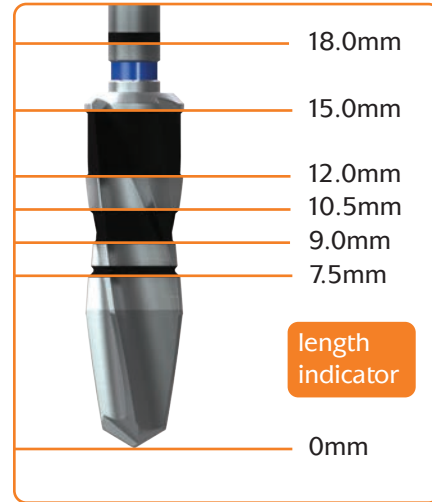
INDIVIDUAL KIT COMPONENTS

HD Drills

The Tapered HD drills feature highly efficient cutting flutes for crisp osteotomies in even the densest bone. Simplified drill markings correspond to the six standard implant lengths. Drills should be replaced every 12-20 osteotomies for maximum cutting efficiency.

features:

- cutting flutes designed for maximum efficiency
- non-reflective surface for high visibility
- simplified drill markings match each implant length
- creates 12-20 osteotomies depending on bone density
- compatible with Tapered Pro, Tapered Internal, Plus, 3.0 and Tissue Level
- recommended drill speed 1,500-2,000 rpm (2.0 & 2.5mm), 1,000 rpm (all others)



TSD2020HD	2.0mm HD Drill
TSD2025HD	2.5mm HD Drill
TSD2032HD	3.2mm HD Drill
TSD2037HD	3.7mm HD Drill
TSD2041HD	4.1mm HD Drill
TSD2047HD	4.7mm HD Drill
TSD2054HD	5.4mm HD Drill

INDIVIDUAL KIT COMPONENTS

Other HD Instruments



- TDG2030HD 3.0mm HD Depth Gauge
- TDG2038HD 3.8mm HD Depth Gauge
- TDG2046HD 4.6mm HD Depth Gauge
- TDG2058HD 5.8mm HD Depth Gauge



- TSC2030HD 3.0mm HD Crestal Bone Drill
- TSC2038HD 3.8mm HD Crestal Bone Drill
- TSC2046HD 4.6mm HD Crestal Bone Drill
- TSC2058HD 5.8mm HD Crestal Bone Drill



- TST2030HD 3.0mm HD Bone Tap
- TST2038HD 3.8mm HD Bone Tap
- TST2046HD 4.6mm HD Bone Tap
- TST2058HD 5.8mm HD Bone Tap

Color coding of HD Instruments

Drills, taps and depth gauges are color-coded by implant body diameter:

- 3.0mm body - no color indicator
- 3.8mm body - yellow
- 4.6mm body - green
- 5.8mm body - blue

INDIVIDUAL KIT COMPONENTS

Miscellaneous Instruments



TYGIDH 3.5/4.5mm HD Implant-level Driver, Handpiece
 TYGIDR 3.5/4.5mm HD Implant-level Driver, Ratchet



TBIDH 5.7mm HD Implant-level Driver, Handpiece
 TBIDR 5.7mm HD Implant-level Driver, Ratchet



130-000
Ratchet



135-351
.050" (1.25mm) Hex
Driver



300-400
Hand Wrench



300-205
4mm Square Drive Extender



122-100
Drill Extender



144-100
Straight
Parallel Pins
(2 per kit)

Color coding of Drivers

Drivers are color-coded by prosthetic connection:

- 3.0mm platform - no color indicator
- 3.5mm platform - yellow
- 4.5mm platform - green
- 5.7mm platform - blue



144-200
20° Angled
Parallel Pins
(2 per kit)



144-230
30° Angled
Parallel Pins
(sold separately)

ANCILLARY INSTRUMENTS

2.5mm Tapered Depth Drills with Stops



TSD202507HD	2.5mm Tapered Depth Drill, 7.5mm Stop
TSD202509HD	2.5mm Tapered Depth Drill, 9mm Stop
TSD202510HD	2.5mm Tapered Depth Drill, 10.5mm Stop
TSD202512HD	2.5mm Tapered Depth Drill, 12mm Stop
TSD202515HD	2.5mm Tapered Depth Drill, 15mm Stop

Stops are set to same length as each implant for crestal placement.

Extended Shank HD Drills



TSD4020HD	2.0mm Extended Shank HD Drill
TSD4025HD	2.5mm Extended Shank HD Drill
TSD4032HD	3.2mm Extended Shank HD Drill
TSD4037HD	3.7mm Extended Shank HD Drill
TSD4041HD	4.1mm Extended Shank HD Drill
TSD4047HD	4.7mm Extended Shank HD Drill
TSD4054HD	5.4mm Extended Shank HD Drill

Extended Shank Drills are 8mm longer than our standard drills.

Burs



122-015 1.5mm starter drill

The 1.5mm starter drill facilitates precise initiation of osteotomies and features a 10.5mm depth marking.

122-110 2.0mm Lindemann Bone Cutter

Side-cutting drill used to correct eccentric osteotomy preparations.

122-104 Alignment Drill

The alignment drill can be used to initiate the osteotomy to a depth of 5mm. The cutting surface of the drill hub prepares the crestal bone for the depth drill.

122-106 #6 Round Bur

ANCILLARY INSTRUMENTS

Tissue Punches



- 122-200 3.0mm Tissue Punch (for a 3.3mm incision)
- PYTP 3.5mm Tissue Punch (for a 3.9mm incision)
- PGTP 4.5mm Tissue Punch (for a 4.7mm incision)
- PBTP 5.7mm Tissue Punch (for a 6.1 mm incision)

Use in flapless surgical procedures to remove a minimal amount of the soft tissue from the crest of the ridge prior to osteotomy preparation or during implant uncover.

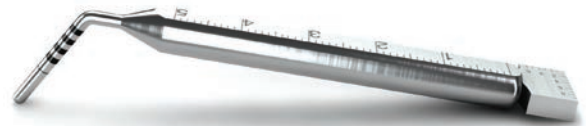
Surgical Driver



150-000 Surgical Driver

Use to drive implants into the osteotomy, particularly in the anterior region. Holds the 4mm Square implant-level drivers and the bone taps.

Implant Spacer / Depth Probe



144-300 Implant Spacer / Depth Probe

Use to provide intraoral measurements. Multi-functional tool for marking implant spacing on the ridge and probing osteotomy depth.

Tapered Offset Dilator Kit



TODKIT2 Tapered Offset Site Dilator Kit

The Tapered Implant site dilators match the geometry of the Tapered surgical drills and are used to create or enlarge osteotomies in soft maxillary bone. These instruments compress the bone laterally rather than removing valuable bone from the surgical site, creating a more dense bone-to-implant interface.

Tapered Ridge Expanders



- TRE30 3.0mm Tapered Ridge Expander
- TRE38 3.8mm Tapered Ridge Expander
- TRE42 4.2mm Tapered Ridge Expander
- TRE46 4.6mm Tapered Ridge Expander

Refer to L02038 for the surgical protocol.

ANCILLARY INSTRUMENTS

Osstell Beacon

OSS-103000 Osstell Beacon

The Osstell Beacon provides an objective and non-invasive method to determine implant stability in a matter of seconds. Measurements are calculated using Resonance Frequency Analysis (RFA) technology, which is based on over 1000 scientific studies.



Osstell SmartPegs (packs of 5)

OSS-100425	3.0mm platform
OSS-100440	3.5mm platform
OSS-100431	4.5mm platform
OSS-100442	5.7mm platform



Guided Surgery Kit

CGS4000

Guided Surgery Kit (with instruments)

Includes the instruments required to place BioHorizons Tapered Implants. 5.8mm implant instruments are sold separately.

CGS3500

Guided Surgery Tray & Lid (without instruments)

features:

- versatile, removable, hinged lid
- easy to disassemble and assemble during cleaning
- spare slots for additional instrumentation
- single color-coded kit for placement of BioHorizons Tapered implants*



Important Note about Guided Surgery Kit

Surgical protocol & guide partners for the CGS4000 can be found at www.biohorizons.com.

* Mount-free Tapered Pro, Tapered Internal, Tapered Plus, Tapered 3.0, Tapered Tissue Level implants.

HEALING ABUTMENTS & IMPRESSION COMPONENTS

Healing Abutments

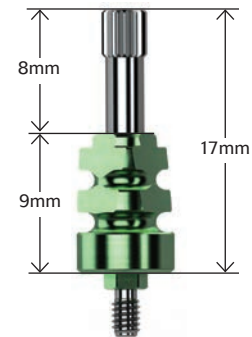
	abutment diameter	2mm height	3mm height	4mm height
3.5mm platform	5.0mm	SYHA20	SYHA30	SYHA40
4.5mm platform	6.0mm	SGHA20	SGHA30	SGHA40
5.7mm platform	7.5mm	SBHA20	SBHA30	SBHA40



For Tapered Tissue Level implants only. Hand-tighten with the .050" (1.25mm) Hex Driver. Titanium Alloy. Laser marked for easy intraoral identification; for example: **SG2**: Green (4.5mm) platform / 2mm height

Direct Pick-up Copings

SYDCH	3.5mm platform, hexed
SGDCH	4.5mm platform, hexed
SBDCH	5.7mm platform, hexed
SYDCN	3.5mm platform, non-hexed
SGDCN	4.5mm platform, non-hexed
SBDCN	5.7mm platform, non-hexed



Use to make an open-tray, implant-level impression. Packaged with the extended direct coping screw, shallow hex (PXDCSS). Titanium Alloy. Hand-tighten.

Implant Analog

SYIA	3.5mm platform
SGIA	4.5mm platform
SBIA	5.7mm platform



Use in the lab to represent the Tapered Tissue Level or Single-stage implants in the working cast. Titanium Alloy.

Direct Coping Screws

PXDCSS Direct Coping Screw, Shallow Hex

Packaged with all Direct Pick-up Copings, except 3.0mm platform, hexed, long (TP3DCL). Short hex depth for easy removal of impression material. May also be used to maintain the screw access hole during fabrication of a screw-retained provisional prostheses. Utilizes the .050" (1.25mm) Hex Driver. Hand-tighten or torque to 30 Ncm depending on application. Titanium Alloy.

PXDCS Direct Coping Screw

Includes a deeper hex that allows up to 7mm to be prepped without losing the hex engagement. May also be used in place of an abutment screw (PXAS) when extra length is needed, or to maintain the screw access hole during fabrication of a screw-retained provisional prostheses. Utilizes the .050" (1.25mm) Hex Driver. Hand-tighten or torque to 30 Ncm depending on application. Titanium Alloy.

PXDCSL Direct Coping Screw, Long

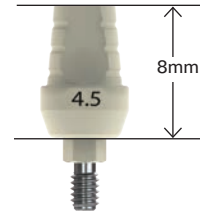
Packaged with 3.0mm platform, hexed, long (TP3DCL). PXDCSL has the same deep hex as the PXDCS and is 5mm longer than the PXDCS and the PXDCSS. May also be used in place of an abutment screw (PXAS) when extra length is needed, or to maintain the screw access hole during fabrication of a screw-retained provisional prostheses. Utilizes the .050" (1.25mm) Hex Driver. Hand-tighten or torque to 30 Ncm depending on application. Titanium Alloy.



IMPRESSION & SCANNING COMPONENTS

PEEK Scan Abutments

PYPSA	3.5mm platform
PGPSA	4.5mm platform
PBPSA	5.7mm platform



Use for table top or intra-oral scanning. May also be used for fabrication of cement- or screw-retained provisional restorations (up to 30 days). Packaged with an abutment screw (PXAS). PEEK (PolyEtherEtherKetone) material. Final torque: 30Ncm.

Note: Prior to scanning, verify that the scan abutment is available in the library of the design software that will be used to design the abutment. Design libraries can be downloaded from www.vulcandental.com.



L02015-038 Custom (CAD/CAM) prosthetics overview module

Snap Scan Body

PYSSB8	3.5mm platform, 8mm
PGSSB8	4.5mm platform, 8mm
PBSSB8	5.7mm platform, 8mm



PYSSB11	3.5mm platform, 11mm
PGSSB11	4.5mm platform, 11mm
PBSSB11	5.7mm platform, 11mm



Use for traditional impressions or intra-oral scanning. PEEK (PolyEtherEtherKetone) and Titanium Alloy material.

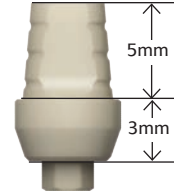


L02015-044 Digital or traditional impressions using the snap scan bodies



TEMPORARY ABUTMENTS

PEEK Temporary Abutments (Regular Emergence)

PYRTA	3.5mm platform
PGRTA	4.5mm platform
PBRTA	5.7mm platform

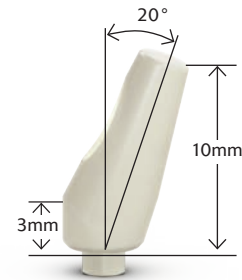


Use for fabrication of cement- or screw-retained provisional restorations (up to 30 days). A direct coping screw (PXDCS, purchased separately) may be used to maintain screw access hole during fabrication of screw-retained provisional prostheses. Packaged with an abutment screw (PXAS). PEEK (PolyEtherEtherKetone) material. Final torque: 30Ncm.

-  **L02015-017** Cement-retained crown using the PEEK temporary abutment module
-  **L02015-018** Screw-retained crown using the PEEK temporary abutment module

Angled PEEK Temporary Abutments (Regular Emergence)

PYRATA	3.5mm platform
PGRATA	4.5mm platform



Use for fabrication of cement-retained provisional restorations (up to 30 days). Packaged with an abutment screw (PXAS). PEEK (PolyEtherEtherKetone) material. Final torque: 30Ncm.

PEEK Temporary Cylinder Abutments

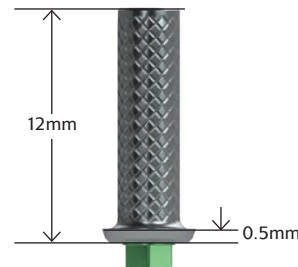
	hexed	non-hexed
3.5mm platform	PYPTC	PYPTCN
4.5mm platform	PGPTC	PGPTCN
5.7mm platform	PBPTC	PBPTCN




Use for fabrication of cement- or screw-retained provisional restorations (up to 30 days). A direct coping screw (PXDCS, purchased separately) may be used to maintain screw access hole during fabrication of screw-retained provisional prostheses. Packaged with an abutment screw (PXAS). PEEK (PolyEtherEtherKetone) material. Final torque: 30Ncm.

Titanium Temporary Abutments

	hexed	non-hexed
3.5mm platform	PYTTH	PYTTN
4.5mm platform	PGTTH	PGTTN
5.7mm platform	PBTTH	PBTTN



Use hexed for single-unit, screw-retained, long term temporary restorations (>30 days). Use non-hexed for multiple-unit, screw-retained, long term temporary restorations (>30 days). Packaged with an abutment screw (PXAS). Titanium Alloy. Final torque: 30Ncm.

-  **L02015-022** Screw-retained bridge using titanium temporary abutments module


CUSTOM & CAD/CAM ABUTMENTS

Hybrid Base Abutments

- SYHYB** Single-stage 3.5mm platform, hexed
- SGHYB** Single-stage 4.5mm platform, hexed
- SBHYB** Single-stage 5.7mm platform, hexed



Note



Hybrid Base Abutments packaged with PXMUAS (light blue) abutment screw.

Use hexed abutments for single-unit, screw-retained or cement-retained, CAD/CAM hybrid zirconia restorations. Use non-hexed abutments for multiple unit, screw-retained CAD/CAM hybrid zirconia restorations. Packaged with an abutment screw (PXMUAS). Titanium Alloy for strength. Final torque: 30Ncm.

Hybrid Abutment Waxing Sleeves

- PHYBWSS** 3.5mm platform (Pack of 3)
- PHYBWSL** 4.5mm & 5.7mm platform (Pack of 3)

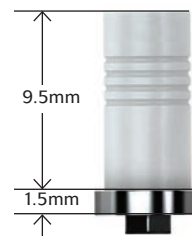
Use as a foundation to create a full contour wax-up for a lithium disilicate glass-ceramic pressed crown. Packaged in packs of three. Acetal resin (Delrin® or Pomalux®) sleeve.



Tissue-level Custom Castable (UCLA) Abutments

- SYCAH** 3.5mm platform, hexed
- SGCAH** 4.5mm platform, hexed
- SBCAH** 5.7mm platform, hexed

- SYCAN** 3.5mm platform, non-hexed
- SGCAN** 4.5mm platform, non-hexed
- SBCAN** 5.7mm platform, non-hexed



Use hexed abutments for single-unit, screw-retained or cement-retained, custom abutment restorations. Non-hexed abutment used for multiple-unit, screw-retained restorations. Packaged with an abutment screw (PXAS). Gold Alloy base with acetal resin (Delrin® or Pomalux®). Final torque: 30Ncm.

CUSTOM & CAD/CAM ABUTMENTS

Precision Angled Driver

PADM14	Manual Driver
PADH14	Handpiece Driver
PADS14	4mm Square Driver
PADS19	4mm Square Driver, Long

Use with PXPAS for angled screw access from 0° to 15°. Titanium Alloy.



Precision Angled Screw

PXPAS Precision Angled Screw

For use with the Hybrid Base Abutment and Precision Angled Driver. Titanium Alloy. Final torque: 30 Ncm.

Note: Precision angled screw and driver are only compatible with the hybrid base abutments in a digital work flow. Not compatible with Laser-Lok titanium base or 2mm tall hybrid base abutments.



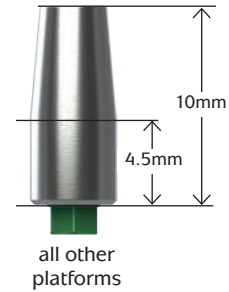
[L02015-045](#) Precision angled screw restoration overview

ESTHETIC & CEMENTABLE ABUTMENTS

Narrow Emergence Abutments

PYNEA	3.5mm platform
PGNEA	4.5mm platform
PBNEA	5.7mm platform

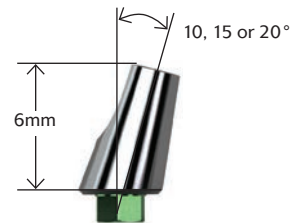
Use to fabricate cement-retained, single- or multiple-unit prostheses. Packaged with an abutment screw (PXAS). Titanium Alloy. Final torque: 30Ncm.



Angled Abutments for Cement-retained Restorations

SYAA	3.5mm platform (10°)
SGAA	4.5mm platform (15°)
SBAA	5.7mm platform (20°)

Use to fabricate cement-retained, single- or multiple-unit prostheses. Packaged with an abutment screw (PXAS). Titanium Alloy. Final torque: 30Ncm.



Simple Solutions Abutment Packs

	abutment pack	restorative pack
3.5mm platform 4mm height	SYAP40	SYRP40
3.5mm platform 5.5mm height	SYAP55	SYRP55
4.5mm platform 4mm height	SGAP40	SGRP40
4.5mm platform 5.5mm height	SGAP55	SGRP55
5.7mm platform 4mm height	SBAP40	SBRP40
5.7mm platform 5.5mm height	SBAP55	SBRP55

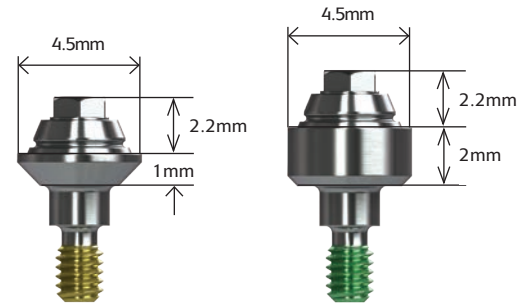


Abutment designed primarily for posterior restorations when abutment modification is not required. Packaged with an abutment screw (PXAS) and Healing Cap that can serve as a temporary. Titanium Alloy. Final torque: 30Ncm. Restorative pack conveniently includes the impression and lab components needed to restore a Simple Solutions abutment. Includes a snap cap impression transfer, one crown waxing sleeve, one bridge waxing sleeve and an implant/abutment replica for the working cast.

MULTI-UNIT ABUTMENTS

Straight Multi-unit Abutments

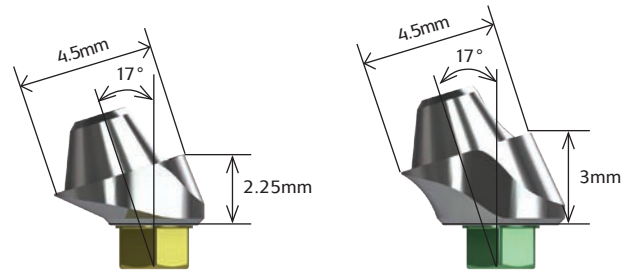
	1mm collar	2mm collar	3mm collar	4mm collar	5mm collar
3.5mm platform	PYMU1	PYMU2	PYMU3	PYMU4	PYMU5
4.5mm platform	PGMU1	PGMU2	PGMU3	PGMU4	PGMU5
5.7mm platform	PBMU1	PBMU2	PBMU3	-	-



Straight Multi-unit abutments may be used for multiple-unit restorations including: screw-retained restorations at the abutment level, cast alloy bars for overdentures and fixed/detachable (hybrid) restorations. Comes with a cover cap (PXMUCC). Final torque: 30 Ncm using a Multi-unit Hex Adapter. Titanium alloy.

17° Angled Multi-unit Abutments

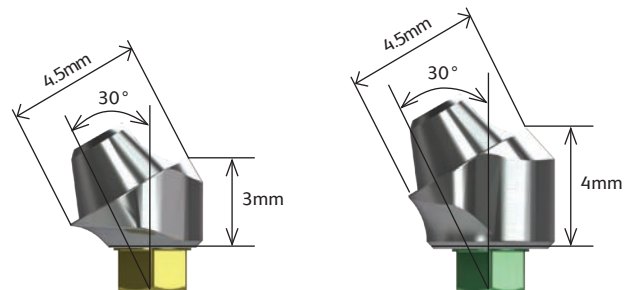
	2.25mm collar	3mm collar	4mm collar
3.0mm platform	TP3MU172	TP3MU173	-
3.5mm platform	PYMU172	PYMU173	PYMU174
4.5mm platform	PGMU172	PGMU173	PGMU174
5.7mm platform	PBMU172	PBMU173	-



17° Angled Multi-unit abutments may be used to angle-correct divergent implants. Use for multiple-unit restorations including: screw-retained restorations at the abutment level, cast alloy bars for overdentures and fixed/detachable (hybrid) restorations. Comes with a cover cap (PXMUCC) and abutment screw (PXMUAS). Final torque: 30 Ncm. Titanium alloy. Conveniently deliver abutment one-handed using an .050 hex or Unigrip™ driver or two-handed using an angled Multi-unit carrier (MUCA).

30° Angled Multi-unit Abutments

	3mm collar	4mm collar	5mm collar
3.0mm platform	TP3MU303	TP3MU304	-
3.5mm platform	PYMU303	PYMU304	PYMU305
4.5mm platform	PGMU303	PGMU304	PGMU305
5.7mm platform	PBMU303	PBMU304	-



30° Angled Multi-unit abutments may be used to angle-correct divergent implants. Use for multiple-unit restorations including: screw-retained restorations at the abutment level, cast alloy bars for overdentures and fixed/detachable (hybrid) restorations. Comes with a cover cap (PXMUCC) and abutment screw (PXMUAS). Final torque: 30 Ncm. Titanium alloy. Conveniently deliver abutment one-handed using an .050 hex or Unigrip™ driver or two-handed using an angled Multi-unit carrier (MUCA).



L02015-028 Multi-unit abutment hybrid or fixed-detachable-screw-retained restoration module

L02015-029 Multi-unit abutment bar overdenture - screw-retained restoration module

L02015-031 Correcting a non-passive framework module

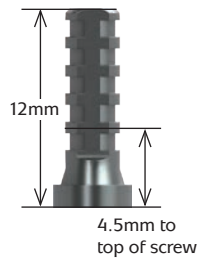
MULTI-UNIT COMPONENTS

Multi-unit Copings

PXMUTC

Titanium

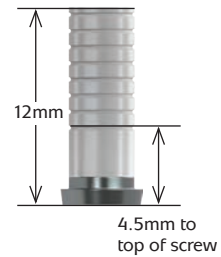
Use for fabricating acrylic temporary and final prostheses. May be trimmed for height. Packaged with prosthetic screw (PXMUPSR). Titanium alloy.



PXMUGC

Gold Custom Castable

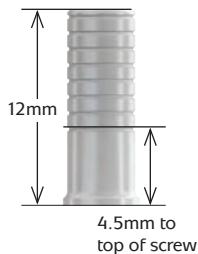
Use for fabricating metal-reinforced acrylic prostheses or bar overdentures. May be trimmed for height. Packaged with prosthetic screw (PXMUPSR). Coping has a gold alloy base with acetal resin (Delrin® or Pomalux®) sleeve.



PXMUPC

Plastic Custom Castable

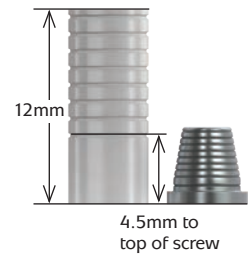
Use for fabricating metal-reinforced acrylic prostheses or bar overdentures. May be trimmed for height. Packaged with prosthetic screw (PXMUPSR). Acetal resin (Delrin® or Pomalux®)



PXMUPFC

Passive Fit

Use for fabricating metal-reinforced acrylic prostheses or bar overdentures, cemented using the passive-fit technique. May be trimmed for height. Packaged with regular and long prosthetic screws (PXMUPSR, PXMUPSL). Coping has a titanium alloy base with acetal resin (Delrin® or Pomalux®) sleeve.

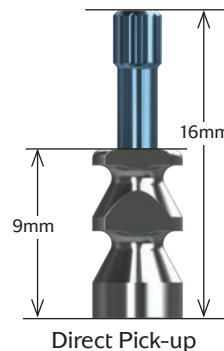


Multi-unit Impression Copings

PXMUDPC

Direct Pick-up Coping, Multi-unit

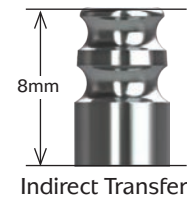
Use to make a direct pick-up impression (open-tray) at the abutment level. Packaged with a prosthetic screw, long. Titanium alloy. Hand tighten.



PXMIUC

Indirect Transfer Coping, Multi-unit

Use to make an indirect transfer (closed-tray) impression at the abutment level. Titanium alloy. Hand tighten.



L02015-010 Multi-unit abutment impression technique - direct open tray module

L02015-011 Multi-unit abutment impression technique - closed tray module

L02015-030 Verification jig fabrication module

Multi-unit Coping Screws

PXMUPSR

Prosthetic Screw, Multi-unit, Regular (pack of 5)

PXMUPSR25

Prosthetic Screw, Multi-unit, Regular (pack of 25)

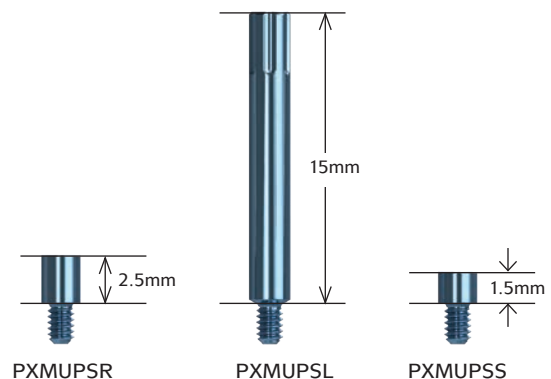
PXMUPSL

Prosthetic Screw, Multi-unit, Long (pack of 5)

PXMUPSS

Prosthetic Screw, Multi-unit, Short (pack of 5)

For attaching copings to the Multi-unit abutments. Hand-tighten or torque to 15 Ncm with .050" (1.25mm) Hex Driver or Unigrip™ screw driver, depending on application. Titanium alloy. Included with copings where indicated but can also be ordered separately.



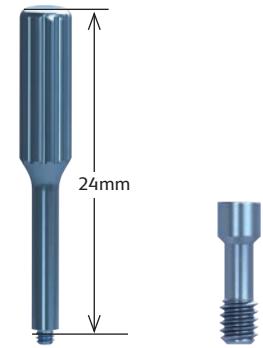
MULTI-UNIT COMPONENTS

Multi-unit Angled Abutment Screw & Abutment Carrier

MUCA Angled Multi-unit Abutment Carrier (pack of 3)
 Use to deliver angled Multi-unit abutments to the surgical site. Titanium alloy.

PXMUAS Abutment Screw, Multi-unit
PXMUAS25 Abutment Screw, Multi-unit (pack of 25)

For angled Multi-unit abutments only. Final torque: 30 Ncm with .050" (1.25mm) Hex Driver or Unigrip™ screw driver. Titanium alloy. Included with abutment but can also be ordered separately.



Multi-unit Cover Cap

PXMUCC Cover Cap, Multi-unit
 Packaged with all Multi-unit abutments. Hand-tighten with .050" (1.25mm) Hex Driver or Unigrip™ screw driver. Titanium alloy.



Multi-unit Abutment Replica & Protection Analog

PXMUAR Abutment Replica, Multi-unit
 Use at lab to represent the Multi-unit/Implant assembly in the working cast. Not for use with implant-level impressions. Titanium alloy.

PXMUPA Protection Analog, Multi-unit (pack of 5)
 Use to protect abutment-coping interface when polishing the metal framework. Titanium alloy.



Multi-unit Hex Adapters for Straight Abutments

PXMUHAM Manual Multi-unit Hex Adapter
 Use to hand tighten straight Multi-unit abutments.

PXMUHAH Handpiece Multi-unit Hex Adapter
 Use to torque straight Multi-unit abutments. Driven by latch-type handpiece. Do not exceed 30 Ncm.

PXMUHAR 4mm Square Multi-unit Hex Adapter
 Use to torque straight Multi-unit abutments. Driven by 4mm square drive handwrench, ratchet, or torque wrench. Do not exceed 30 Ncm.



Manual

Handpiece

4mm Square

Paralleling Pins

144-100 Straight Parallel Pins
144-200 20° Angled Parallel Pin
144-230 30° Angled Parallel Pin

Use parallel pins to assess implant angulation and estimate which angled abutment is appropriate for the restoration.



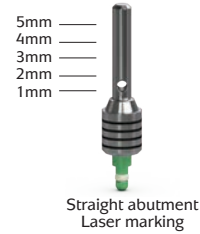
MULTI-UNIT COMPONENTS

Multi-unit Try-in Abutments

TRYPYMU	3.5mm Multi-unit Try-in Straight Abutment
TRYPGMU	4.5mm Multi-unit Try-in Straight Abutment
TRYPBMU	5.7mm Multi-unit Try-in Straight Abutment

Multi-unit Try-in Abutments may be used to measure tissue thickness and verify proper prosthetic seating prior to final abutment seating.

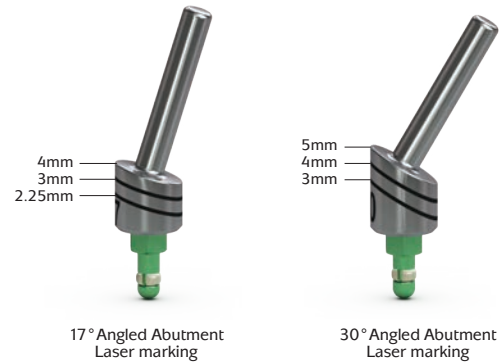
Each Try-in is laser marked from 1mm to 5mm to correspond with the Straight Multi-unit Abutment collar heights and can also be used as a measuring tool for OD Secure, Locator, Locator R-Tx and Ball abutment systems. Try-in is carried to the site by the handle and snaps into the implant.



TRYPYMU17	3.5mm Multi-unit Try-in 17° Angled Abutment
TRYPGMU17	4.5mm Multi-unit Try-in 17° Angled Abutment
TRYPBMU17	5.7mm Multi-unit Try-in 17o Angled Abutment

TRYPYMU30	3.5mm Multi-unit Try-in 30° Angled Abutment
TRYPGMU30	4.5mm Multi-unit Try-in 30° Angled Abutment
TRYPBMU30	5.7mm Multi-unit Try-in 30o Angled Abutment

Each Try-in is laser marked to correspond with the Angled Multi-unit Abutment collar heights. Try-in is carried to the site by the handle and snaps into the implant.



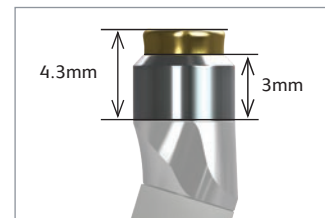
Multi-unit Locators®

LMUTC-2	Locator Multi-unit Abutment w/ Ti Collar (2 pack)
LMUTC-10	Locator Multi-unit Abutment w/ Ti Collar (10 pack)

Use Male Processing Package for these collars (LMPP-2 or LMPP-10).

LMUDC-2	Locator Multi-unit Abutment w/ Delrin® Collar (2 pack)
LMUDC-10	Locator Multi-unit Abutment w/ Delrin® Collar (10 pack)

Use Locator Multi-unit Bar Processing Package listed below for these collars.

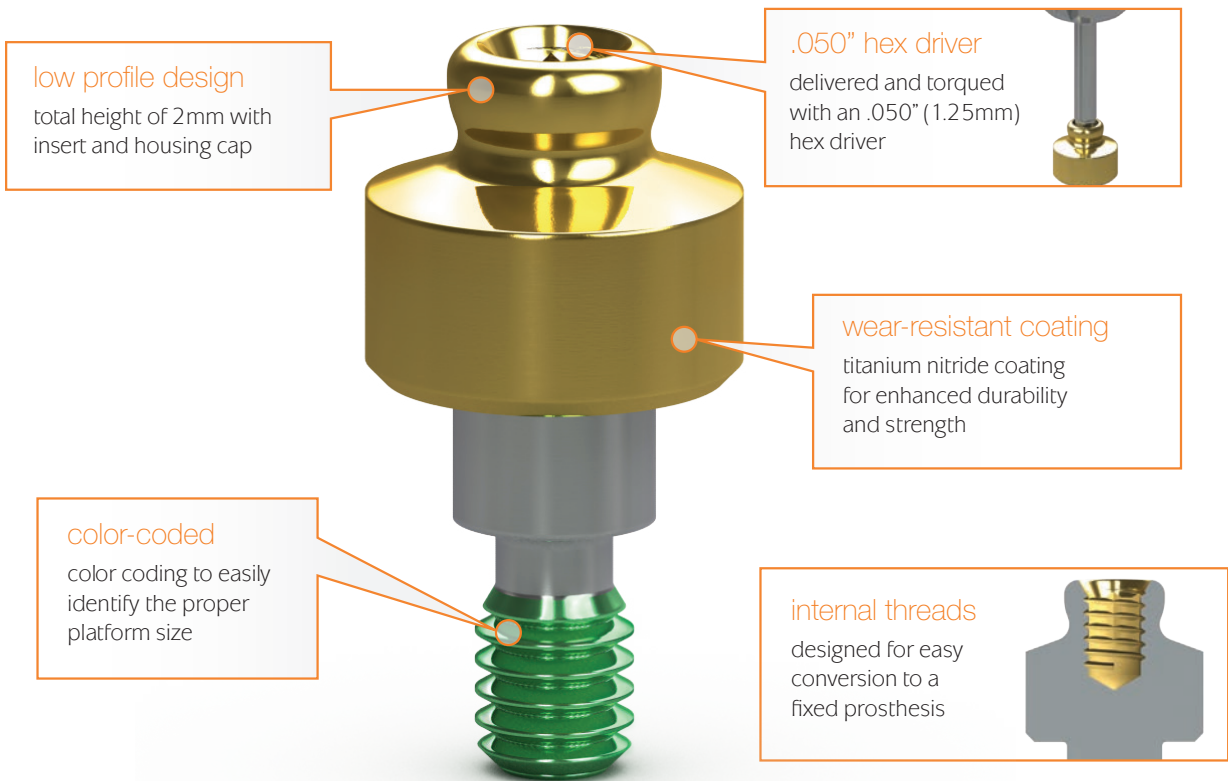


LMUBPP-2	Locator Multi-unit Bar Processing Package (2 pack)
LMUBPP-10	Locator Multi-unit Bar Processing Package (10 pack)

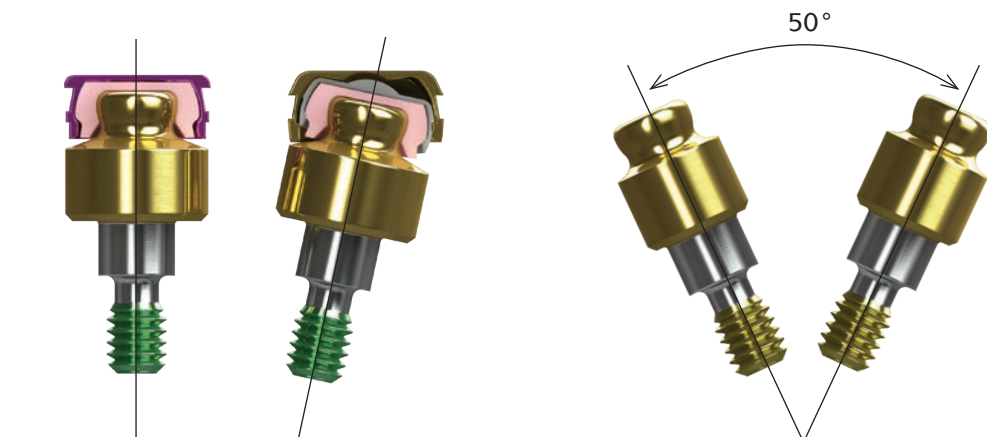


Locator attachments for multi-unit abutments have been designed as a free-standing option (LMUTC) for the angled multi-unit posterior sites and for castable bar-splinted applications (LMUDC). The Locator Multi-unit Bar Processing Package includes Denture Cap with Yellow Bar Processing Male, Dual Retentive Replacement Males: Clear, Pink, Blue, and Block-Out Spacer. Offered in 2 packs and 10 packs. For complete instructions, visit the Zest Anchors web site.

The OD Secure abutment uses the industry's lowest profile connection to attach dentures and partial dentures to dental implants. The abutment is designed for easy delivery using an .050" hex driver and is color-coded to ensure that the abutment matches the implant platform every time.



With cuff heights ranging from 0.5mm to 6mm, the OD Secure provides attachment solutions for even the most challenging cases.



The housing cap that is included with each OD Secure abutment corrects up to 30° of divergence. The new Xtend housing cap corrects up to 50° of divergence and is compatible with the retention caps included in the OD Secure abutment kit.

OD SECURE ABUTMENTS & COMPONENTS

OD Secure Abutment System

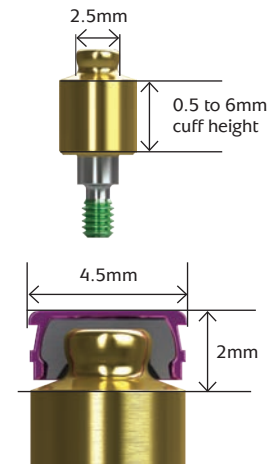
The OD Secure comes packaged with the abutment, metal housing, four retentive inserts, a lab processing insert and a protection disk.



- L02015-040 OD Secure impression technique module
- L02015-041 OD Secure chairside pick-up using existing denture module



	3.5mm platform	4.5mm platform	5.7mm platform
0.5mm cuff height	PYODSK0	PGODSK0	PBODSK0
1mm cuff height	PYODSK1	PGODSK1	PBODSK1
2mm cuff height	PYODSK2	PGODSK2	PBODSK2
3mm cuff height	PYODSK3	PGODSK3	PBODSK3
4mm cuff height	PYODSK4	PGODSK4	PBODSK4
5mm cuff height	PYODSK5	PGODSK5	PBODSK5
6mm cuff height	PYODSK6	PGODSK6	PBODSK6



OD Secure Abutment Components

ODS-XH Xtend Housing Cap (2pack)
Xtend Housing Cap assembled with Lab Processing Insert and is used to correct up to 50° of divergence.



ODS-HCPM Housing Cap (2pack)
New pink Housing Cap comes assembled with Lab Processing Insert.



ODSRC-V Retention Cap Insert (4pack)
Retention: 6lbs - Hard



ODSRC-P Retention Cap Insert (4pack)
Retention: 2.5lbs - Soft



ODSRC-C Retention Cap Insert (4pack)
Retention: 4lbs - Medium



ODSRC-Y Retention Cap Insert (4pack)
Retention: 1.5lbs - Extra Soft



ODS-PM Lab Processing Insert (4pack)



ODS-CAK Cap Assortment Kit (2 pack)



ODS-BS Block-out Spacer (4pack)



ODSA OD Secure Analog (2pack)



ODSIC Impression Coping (2pack)



ODSCM Castable Male (2pack)



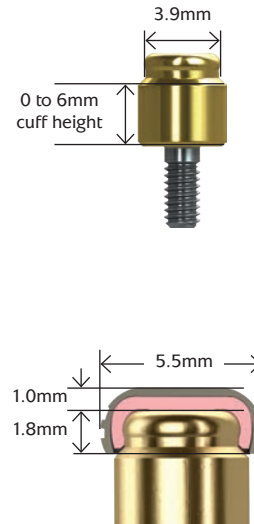
ODSCT Cap Insert/Extractor Tool



LOCATOR ABUTMENTS

Locator Abutments

	3.5mm platform	4.5mm platform	5.7mm platform
0mm cuff height	PYLA0	PGLA0	not available
1mm cuff height	PYLA1	PGLA1	PBLA1
2mm cuff height	PYLA2 (2.5mm)	PGLA2	PBLA2
3mm cuff height	PYLA3 (3.5mm)	PGLA3	PBLA3
4mm cuff height	PYLA4 (4.5mm)	PGLA4	PBLA5
5mm cuff height	PYLA5 (5.5mm)	PGLA5	PBLA5
6mm cuff height	PYLA6 (6.5mm)	PGLA6	PBLA6



Locator Implant Attachments are designed for use with overdentures or partial dentures retained in whole or in part by dental implants in the mandible or maxilla. Order by cuff height to match the height of the gingival tissue. The abutment will extend above the tissue by 1.8mm to allow the Locator Male to seat completely. Order one Locator Male Processing Set for each Locator Abutment (sold in packs of 2 or 10). Can also be used with tissue-level implants. Titanium Alloy.

The Male Processing Package provides 3 choices of retention. The Replacement Males (clear, pink and blue) are used to restore implants with up to 10° of divergence (20° between implants). The Extended Range Replacement Males (green and red) accommodate divergences from 10° and 20° (40° between implants), and may be purchased separately.



L02015-013 Locator® abutment impression technique module

L02015-032 Locator® abutment overdenture: chairside pickup using existing denture

Locator Components

LCT Core Tool

Multi-purpose tool serves as hand driver for seating Locator Abutments onto the implants, seating tool for nylon male inserts and insert removal tool.

Note: now packaged with one Locator Abutment Holder Sleeve.



LAHS Locator Abutment Holder Sleeve (4 pack)

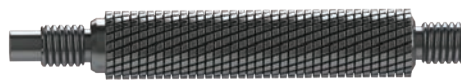
Use to retain and deliver the Locator Abutment using the driver portion of the Core Tool.



Locator core tool instructions



Male retention insert removal tool
For removing the male retention inserts from the metal housing



Male retention insert tool
For placing the male retention inserts into the metal housing



Hand driver
For hand tightening the Locator abutment



Locator abutment holder
For retaining and delivering the Locator abutment using the hand driver portion of the core tool.

LOCATOR COMPONENTS

Locator Components

LMPP-2 Male Processing Package (2 pack)

Includes: (2) Denture Caps assembled with Black Processing Males; (2) White Block-out Spacers; (2) Clear, (2) Pink and (2) Blue Nylon Males.



LMPP-10 Male Processing Package (10 pack)

Includes: (10) Denture Caps assembled with Black Processing Males; (10) White Block-out Spacers; (10) Clear, (10) Pink and (10) Blue Nylon Males.

LMPPER-2 Male Processing Package, Extended Range (2 pack)

Includes: (2) Denture Caps assembled with Black Processing Males; (2) White Block-out Spacers; (2) Green, (2) Orange and (2) Red Nylon Males.



LMPPER-10 Male Processing Package, Extended Range (10 pack)

Includes: (10) Denture Caps assembled with Black Processing Males; (10) White Block-out Spacers; (10) Green, (10) Orange and (10) Red Nylon Males.

LRM-G Extended Range Replacement Male (green)
Retention: 4lbs, 4 pack



LRM-C Replacement Male (clear)
Retention: 5lb, 4 pack



LRM-O Extended Range Replacement Male (orange)
Retention: 2lbs, 4 pack



LRM-P Replacement Male (pink)
Retention: 3lb, 4 pack



LRM-R Extended Range Retention Replacement Male (red)
Retention: 1lb, 4 pack



LRM-B Replacement Male (blue)
Retention: 1.5lb, 4 pack



LRM-Z Extended Range Replacement Male (gray)
Retention: 0lb, 4 pack



LBPRM Black Processing Replacement Male



LFA-4MM Female Analog 4mm (4 pack)
Use for 3.0, 3.5 and 4.5 platforms



LSDT-15MM Square Drive Tool (15mm length)
Use with a torque wrench to seat Locator Abutments.



LFA-5MM Female Analog 5mm (4 pack)
Use for 5.7 platform



LSDT-21MM Square Drive Tool (21mm length)
Use with a torque wrench to seat Locator Abutments.



LIC Impression Coping (4 pack)



LPP Parallel Post (4 pack)



LAMG Angle Measurement Guide



LOCATOR R-TX ABUTMENTS & COMPONENTS

Locator R-Tx Abutments

Locator R-Tx is a better, simpler and stronger system that relies on the same restorative techniques as the original Locator. Now available with the housing cap, spacer and retentive inserts for a convenient all-in-one package.

Each Assembly includes: (1) Abutment, (1) Denture Attachment Housing with Black Processing Insert, (4) Nylon Retention Inserts, and (1) Block-out Spacer.



	3.5mm platform	4.5mm platform	5.7mm platform
0.5mm cuff height	PYLRTX0	PGLRTX0	not available
1 mm cuff height	PYLRTX1	PGLRTX1	PBLRTX1
2mm cuff height	PYLRTX2	PGLRTX2	PBLRTX2
3mm cuff height	PYLRTX3	PGLRTX3	PBLRTX3
4mm cuff height	PYLRTX4	PGLRTX4	PBLRTX4
5mm cuff height	PYLRTX5	PGLRTX5	PBLRTX5
6mm cuff height	PYLRTX6	PGLRTX6	PBLRTX6

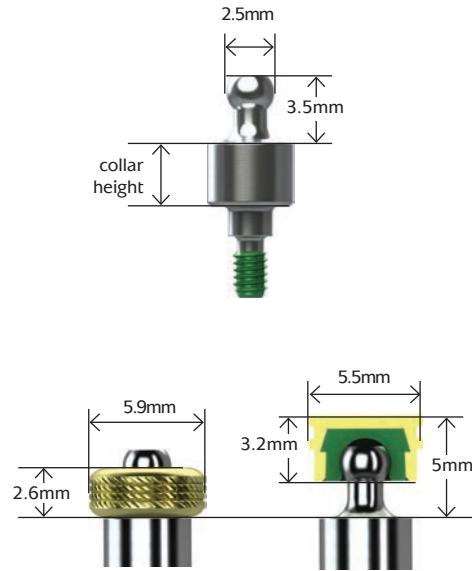
Locator R-Tx Components

LRTX-GY	Zero Retention Insert Replacement (4pack)		LRTX-PM	Processing Insert Replacement (4pack)	
LRTX-B	Low Retention Insert Replacement (4pack)		LRTX-PS	Processing Spacer Replacement (4pack)	
LRTX-P	Medium Retention Insert Replacement (4pack)		LRTX-IC	Impression Coping (4pack)	
LRTX-C	High Retention Insert Replacement (4pack)		LRTX-A3	3.5mm Abutment Analog (4pack)	
LRTX-BS	Block-Out Spacer Replacement (20pack)		LRTX-A4	4mm Abutment Analog (4pack)	
LRTX-DC	Denture Attachment Processing Assembly (4pack)		LRTX-A5	5mm Abutment Analog (4pack)	
LRTX-TL	Locator R-Tx Insertion/Removal Tool				

BALL ABUTMENTS

Ball Abutments

PYBA1	3.5mm platform, 1mm collar height
PYBA3	3.5mm platform, 3mm collar height
PYBA5	3.5mm platform, 5mm collar height
PGBA1	4.5mm platform, 1mm collar height
PGBA3	4.5mm platform, 3mm collar height
PGBA5	4.5mm platform, 5mm collar height
PBBA1	5.7mm platform, 1mm collar height
PBBA3	5.7mm platform, 3mm collar height



Use for retention of tissue-supported overdentures. Ball Abutments may be used for indirect transfer impressions. Ball Abutment Analogs on facing page are used for producing a working cast. Can also be used with tissue-level implants. Titanium Alloy.

Sizing comparison of O-ring Attachment and Ball Attachment



- L02015-014** Ball abutment impression technique
- L02015-033** Ball abutment overdenture: chairside pickup using existing denture

O-ring Attachment Set

260-100 O-ring Attachment Set

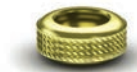
Standard O-ring attachment for processing into denture. Includes: (1) O-ring encapsulator, (2) Processing O-rings and (2) Clinical O-rings. Recommended for relatively parallel implants (5° of divergence or 10° between implants).



O-ring Individual Components

260-300 O-ring Encapsulator

Female receptacle processed into denture. Titanium. 2 per package.



260-220 Processing O-ring

Use for lab processing applications. Buna. 12 per package.



260-210 Clinical O-ring

Use for clinical applications. Silicone. 12 per package.



BALL ABUTMENT COMPONENTS

Ball Attachment Set

BCAS Ball Attachment Set

Includes: (1) Titanium Housing, (3) Female Nylon Inserts - white (more retention), pink (less retention), black (lab processing) and (1) Protective Disk (BCPD, protects tissue during impression making or denture pick-up)



The Ball Attachment system offers several advantages over traditional O-ring attachments:

- Greater abutment angulation (14° of divergence or 28° between implants)
- 0.4mm of less mesial/distal/buccal/lingual space
- Four different levels of retention instead of one

Ball Abutment Components

BCAHT Attachment Housings - Titanium
For Resin pickup or Soldering.
2 per package.



BCIY Yellow Nylon Insert
Clinical use. 2 per package.
Very elastic retention: 500-550g



BCIB Black Nylon Insert
Lab Processing and Chair-side
Denture Pick-up. 2 per package.



BCIP Pink Nylon Insert
Clinical use. 2 per package.
Elastic retention: 800-950g



BCIW White Nylon Insert
Clinical use. 2 per package.
Slightly elastic retention: 1200-1300g



BCIG Green Nylon Insert
Clinical use. 2 per package.
Extremely elastic retention.



BCDR Directional Rings
Use for obtaining parallelism. 0°
7° and 14° rings. Set of 3.



BCIST Insert Seating Tool
Use to seat nylon inserts in attachment housings.



BCR Reamer
Use to adjust retention of nylon inserts.



Ball Abutment Analogs

PYGBAA 3.5/4.5mm Ball Abutment Analog

PBBAA 5.7mm Ball Abutment Analog

Use at lab to represent the Ball Abutment/Implant assembly in the working cast. Only use in conjunction with Ball Abutments. Titanium Alloy.



PROSTHETIC INSTRUMENTATION

Prosthetic Kit

PROS3000 Enhanced Prosthetic Instrumentation Kit

Includes:

- .050 (1.25mm) Manual Hex Driver
- .050 (1.25mm) Manual Hex Driver, Long
- .050 (1.25mm) Handpiece Hex Driver
- .050 (1.25mm) Handpiece Hex Driver, Long
- .050 (1.25mm) 4mm Square Hex Driver
- .050 (1.25mm) 4mm Square Hex Driver, Long
- Hand Wrench
- 4mm Square Drive Extender
- 4mm Square Multi-unit Hex Adapter
- 12 Try-in Abutment Slots
- 8 Optional Instrument Slots
- Space for Torque Wrenches & AS123 Hand Unit

Multi-unit Try-in Abutments, 300-100 and ATW are sold separately.



PROS2500 Prosthetic Instrumentation Tray (not shown)

Tray without instruments (included with PROS3000)

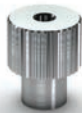
300-100* AS123 Hand Unit

Provides improved vision and easy access to prosthetic components in posterior regions of the mouth. Hand Wrench and Drivers are sold separately.



300-400* Hand Wrench

Use on drive end of AS123 Hand Unit. Also fits individual Hex Drivers/Adapters and Bone Taps.



300-206* 4mm Square Drive Extender

Replaced 300-205 starting in June 2010. Includes PEEK C-ring for durable retention in Ratchet. Cannot be used with bone taps.



Torque Wrenches

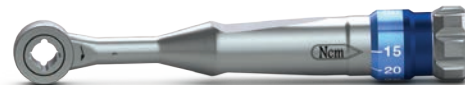
BIOTORO BioHorizons Adjustable Torque Wrench

Adjustable torque wrench designed to attach to all 4mm drivers from BioHorizons. Supplied with a dual direction mechanism that allows for insertion and removal functions. When the desired torque is reached (a choice of 10Ncm to 30Ncm) the torque wrench snaps to avoid over torquing.



ATW ITL Precise Adjustable Torque Wrench

Place both implants and abutments with 9 distinct torque settings (15, 20, 25, 30, 35, 40, 45, 50 and 60 Ncm). A simple twist of the handle locks in precision-engineered torque values and guarantees accuracy and repeatability.



C12374 Elos Adjustable Torque Wrench

Lightweight titanium design is easy to use as an adjustable torque wrench or a ratchet. Quickly disassembles for cleaning. No calibration required.



C8521 Elos Replacement Bit, 4mm Square Adapter

C8381 Elos Replacement Bit, Handpiece

AGYR-15500 Torque Control 15500

Ergonomic design is the ideal solution for access to screws placed in the posterior. The 7 predetermined torque values (10, 15, 20, 25, 30, 32 and 35 Ncm) make it a tool of extreme precision.

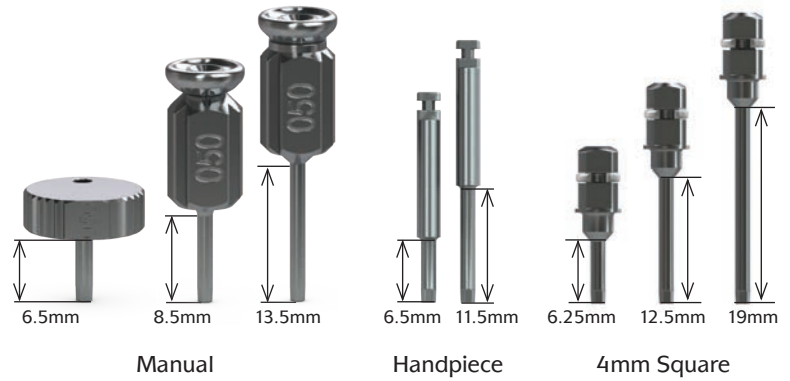


** Instrument o-rings & c-rings wear out over time. If an instrument is no longer held securely by its associated driver, order a replacement ring through Customer Care.*

PROSTHETIC INSTRUMENTATION

.050" (1.25mm) Hex Drivers

- 135-251 Manual Hex Driver, Short
- 135-351 Manual Hex Driver
- 135-451 Manual Hex Driver, Long
- 134-350 Handpiece Hex Driver
- 134-450 Handpiece Hex Driver, Long
- 300-350* 4mm Square Hex Driver
- 300-351* 4mm Square Hex Driver, Long
- 300-354* 4mm Square Hex Driver, Extra Long



For installation and removal of cover caps, prosthetic and abutment screws.

Abutment Prepping Handles

- TP3AH 3.0mm platform Analog Handle
- PYGAH 3.5/4.5mm platform Analog Handle
- PBAH 5.7mm platform Analog Handle



Use to comfortably hold abutments for chairside or laboratory preparation. Abutments are secured to the handle with a standard abutment screw (PXAS). Comes in three sizes: 3.0, 3.5/4.5 and 5.7mm.

Clean-out Tap Tools

- PXCT* Implant Clean-out Tap Tool

Use PXCT to re-thread internal connection implants (Tapered Internal, Internal, Laser-Lok 3.0, Tapered Tissue Level and Single-stage), and 122-170 to re-thread Abutment for Screw abutments where the internal threads have become damaged. Requires a standard surgical Ratchet (130-000) or Hand Wrench (300-400) as a drive mechanism.



* Instrument o-rings & c-rings wear out over time. If an instrument is no longer held securely by its associated driver, order a replacement ring through Customer Care.

PROSTHETIC PLATFORM IDENTIFICATION

Symbol Descriptions for Product Labeling

The diagram shows a vertical product label for a BioHorizons Tapered Tissue Internal Implant. Callouts point to various elements:

- REF**: Reference/article number (TTLG4609)
- LOT**: Lot/batch number (YYXXXX)
- Use before expiration date (YYYY-MM-DD)**: Indicated by an hourglass icon.
- Manufacture date (YYYY-MM-DD)**: Indicated by a sawtooth icon.
- Sterile by gamma irradiation**: Indicated by a **STERILE IR** symbol.
- Non-sterile**: Indicated by a **NON-STERILE** symbol.
- Label number**: LTTLG4609B Rev C
- Single use only**: Indicated by a crossed-out circle symbol.
- Rx Only**: Prescription only, indicated by a crossed-out circle with an 'X'.
- CE 2797**: CE mark and number, indicating compliance with the Medical Devices Directive 93/42/EEC.
- EC REP**: EU Authorized Representative logo.

Additional text on the label includes: "Tapered Tissue Internal Implant Laser-Lok, RBT 4.6 x 9mm, 4.5 Plat", "BIOHORIZONS", "2300 Riverchase Center Birmingham, AL 35244 Made in USA", "do not reuse", and "Tapered Tissue Internal Implant Laser-Lok, RBT 4.6 x 9mm, 4.5 Plat".

Prosthetic Platform Color Coding

- BioHorizons prosthetic components are color-coded to match BioHorizons implant prosthetic platforms. To ensure compatibility:
- (1) determine the BioHorizons implant system from the patient's record (e.g. Tapered, Tapered Plus, Tapered Tissue Level)
 - (2) verify that the prosthetic component is intended for that system
 - (3) match the restorative component color with the implant prosthetic platform.

Tapered Tissue Level Implant System

prosthetic connection	3.5mm	3.5mm	4.5mm	5.7mm
body diameter	3.0mm	3.8mm	4.6mm	5.8mm

Note: BioHorizons Internal prosthetic components are indicated for use with Zimmer Screw-Vent® and Tapered Screw-Vent® implant systems.

REFERENCES

References

1. Incidence of peri-implant diseases on implants with and without laser-microgrooved collar: A 5-year retrospective study carried out in private practice patients. Guarnieri R, Grande M, Zuffetti F, Testori T. *Int J Oral Maxillofac Implants*. 2018 Mar/Apr;33(2):457-465.
2. For a complete research summary, please see Laser-Lok Clinical Overview (BioHorizons document ML0606).
3. Human histologic evidence of a connective tissue attachment to a dental implant. M Nevins, ML Nevins, M Camelo, JL Boyesen, DM Kim. *International Journal of Periodontics & Restorative Dentistry*. Vol. 28, No. 2, 2008.
4. The effects of laser microtextured collars upon crestal bone levels of dental implants. S Weiner, J Simon, DS Ehrenberg, B Zweig, JL Ricci. *Implant Dentistry*. Volume 17, Number 2, 2008. p. 217-228.
5. Influence of a microgrooved collar design on soft and hard tissue healing of immediate implantation in fresh extraction sites in dogs. SY Shin, DH Han. *Clin. Oral Impl. Res.* 21, 2010; 804-814.
6. Maintaining inter-implant crestal bone height via a combined platform-switched, Laser-Lok® implant/abutment system: A proof-of-principle canine study. M Nevins, ML Nevins, L Gobbato, HJ Lee, CW Wang, DM Kim. *Int J Periodontics Restorative Dent*. Volume 33, Number 3, 2013.
7. Histologic evidence of a connective tissue attachment to laser microgrooved abutments: A canine study. M Nevins, DM Kim, SH Jun, K Guze, P Schupbach, ML Nevins. *International Journal of Periodontics & Restorative Dentistry*. Vol. 30, No. 3, 2010.
8. Histologic evidence of connective tissue integration on laser microgrooved abutments in humans. NC Geurs, PJ Vassilopoulos, MS Reddy. *Clinical Advances in Periodontics*. Vol. 1, No. 1, May 2011.
9. Connective tissue attachment to laser microgrooved abutments: A human histologic case report. M Nevins, M Camelo, ML Nevins, P Schupbach, DM Kim. *Int J Periodontics Restorative Dent*. Volume 32, Number 4, 2012. p. 384-392.
10. Reattachment of the connective tissue fibers to the laser microgrooved abutment surface. M Nevins, M Camelo, ML Nevins, P Schupbach, DM Kim. *Int J Periodontics Restorative Dent*. Volume 32, Number 4, 2012. e131-134.
11. The impact of dis-/reconnection of laser microgrooved and machined implant abutments on soft- and hard-tissue healing. Ighhaut G, Becker K, Golubovic V, Schliephake H, Mihatovic I. *Clin Oral Implants Res*. 2013 Apr;24(4):391-7.
12. Implant-Gingival Unit Stability Around One-Stage Implants with Laser-Microgrooved Collar: Three-Year Result of a Prospective Study. Renzo Guarnieri, MD, DDS, Gabriele Miccoli, DDS, PhD, Marco Seracchiani, DDS, PhD, Maurizio D'Angelo, DDS, PhD, Dario Di Narado, DDS, PhD, and Luca Testarelli, DDS, PhD. *Open Dent J* 2020(14); 226-234. doi: 10.2174/1874210602014010226

ORDERING & WARRANTY INFORMATION

Territory Manager: _____

cell phone: _____

email and/or fax: _____

BioHorizons Lifetime Warranty on Implants and Prosthetics for clinicians: All BioHorizons implants and prosthetic components include a Lifetime Warranty. BioHorizons implant or prosthetic components will be replaced if removal of that product is due to failure (excluding normal wear to overdenture attachments).

Additional Warranties: BioHorizons warranties surgical drills, taps and other surgical and restorative instruments.

(1) Surgical Drills and Taps: Surgical drills and taps include a warranty period of ninety (90) days from the date of initial invoice. Surgical instruments should be replaced when they become worn, dull, corroded or in any way compromised. Surgical drills should be replaced after 12 to 20 osteotomies.¹⁰

(2) Instruments: The BioHorizons manufactured instrument warranty extends for a period of one (1) year from the date of initial invoice. Instruments include drivers, implant site dilators and BioHorizons tools used in the placement or restoration of BioHorizons implants.

Return Policy: Product returns require a Return Authorization Form, which may be acquired by contacting Customer Care. The completed Return Authorization Form must be included with the returned product. For more information, please see the reverse side of the invoice that was shipped with the product.

Disclaimer of Liability: BioHorizons products may only be used in conjunction with the associated original components and instruments according to the Instructions for Use (IFU). Use of any non-BioHorizons products in conjunction with BioHorizons products will void any warranty or any other obligation, expressed or implied.

Treatment planning and clinical application of BioHorizons products are the responsibility of each individual clinician. BioHorizons strongly recommends completion of postgraduate dental implant education and adherence to the IFU that accompany each product. BioHorizons is not responsible for incidental or consequential damages or liability relating to use of our products alone or in combination with other products other than replacement or repair under our warranties.

Distributed Products: For information on the manufacturer's warranty of distributed products, please refer to their product packaging. Distributed products are subject to price change without notice.

Validity: Upon its release, this literature supersedes all previously published versions.

Availability: Not all products shown or described in this literature are available in all countries. BioHorizons continually strives to improve its products and therefore reserves the right to improve, modify, change specifications or discontinue products at any time.

Any images depicted in this literature are not to scale, nor are all products depicted. Product descriptions have been modified for presentation purposes. For complete product descriptions and additional information, visit store.biohorizons.com.

Direct Offices

BioHorizons USA
888-246-8338 or
205-967-7880

BioHorizons Canada
866-468-8338

BioHorizons Spain
+34 91 713 10 84

BioHorizons UK
+44 (0)1344 752560

BioHorizons Chile
+56 (2) 23619519

BioHorizons Italy
800-063-040

BioHorizons Mexico
800-953-0498

Distributors

For contact information in our 90 countries, visit biohorizons.com



BioHorizons®, Laser-Lok®, MinerOss®, AutoTac®, Mem-Lok® and TeethXpress® are registered trademarks of BioHorizons. Unigrip™ is a trademark of Nobel Biocare AB. Zimmer® Dental ScrewVent® and Tapered ScrewVent® are registered trademarks of Zimmer, Inc. AlloDerm™ and AlloDerm GBR™ are trademarks of LifeCell Corporation, an Allergan affiliate. Grafton® DBM is a registered trademark of Medtronic, Inc. Cytoplast® is a registered trademark of Osteogenics Biomedical, Inc. Puros Dermis is a registered trademark of Zimmer Biomet. Mucograft is a registered trademark of Ed. Geistlich Sogne Ag Fur Chemische Industrie. Symbios PerioDerm is a registered trademark of Dentsply Sirona. Hu-Friedy® is a registered trademark of Hu-Friedy Mfg. Co., LLC. Spiralock® is a registered trademark of Spiralock Corporation. Pomalux® is a registered trademark of Westlake Plastics Co. Locator® is a registered trademark of Zest Anchors, Inc. Delrin® is a registered trademark of E.I. du Pont de Nemours and Company. Bio-Gide® is a registered trademark of Edward Geistlich Sohne AG Fur Chemische Industrie. BioMend® is a registered trademark of Zimmer Biomet Dental. IntraSpin®, L-PRF® and Xpression® are trademarks of Intra-Lock® International Inc. Not all products shown or described in this literature are available in all countries. As applicable, BioHorizons products are cleared for sale in the European Union under the EU Medical Device Directive 93/42/EEC and the tissues and cells Directive 2004/23/EC. We are proud to be registered to ISO 13485:2016, the international quality management system standard for medical devices, which supports and maintains our product licences with Health Canada and in other markets around the globe. Original language is English. ©BioHorizons. All Rights Reserved.

ML0175 REV A SEP 2020

shop online at
store.biohorizons.com