

Form meets Function

Fusion implants by Intra-Lock offer a unique combination of features that have been carefully designed to deliver successful dental implant treatment. The macro-scale form of the implant is designed for stability with Blossom cutting flutes and aggressive threads. With the Ossean nano-scale surface, the biological function of the implant is to promote tissue development for long term performance and stability.¹ The Fusion system is supported by a comprehensive prosthetic portfolio and offers flexibility with guided and free-hand surgical workflows.

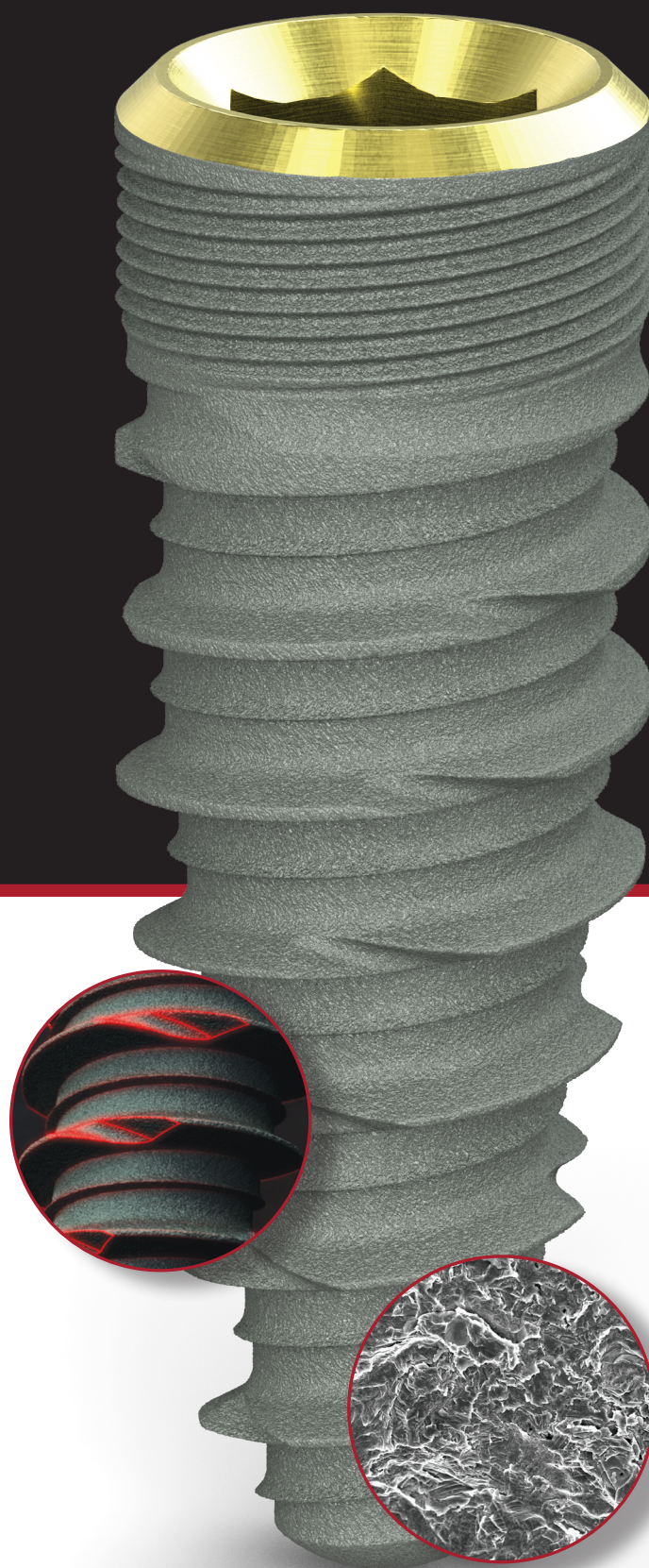
- Blossom® redefining cutting technology
- Ossean® surface to induce faster healing¹
- Restorative simplicity and surgical flexibility



The Blossom cutting design allows for the Fusion implants to continually cut through bone with efficiency and minimal force. This minimizes trauma to the tissue, and evenly distributes the cutting force along the full body of the implant. This design functions to lower insertion torque while increasing implant stability and evenly dispersing bone chips along the threads of the implant.² This dispersion helps generate an autologous micro-graft at the implant site, which can promote faster osseointegration.³



The bio-active structure of the Ossean surface is developed by impregnating calcium phosphate into the implant surface, developing a fractal structure that mirrors its design at all levels of magnification.^{4,5,6} This surface can facilitate fibril attachment, platelet deposition and osteoblast development.⁷ These functions can favorably alter the genetic expression of localized cells and induce faster healing of the implants.¹



Fusion Prosthetics

Fusion prosthetics are engineered for exact seating and precisely manufactured for reliable performance. The conical design of the connection allows for abutment contact around the perimeter of the implant, which can be verified on a radiograph. The torquing of the abutment can create a biologic seal while optimally transmitting the force to the implant, reducing the risk of screw fracture or loosening.

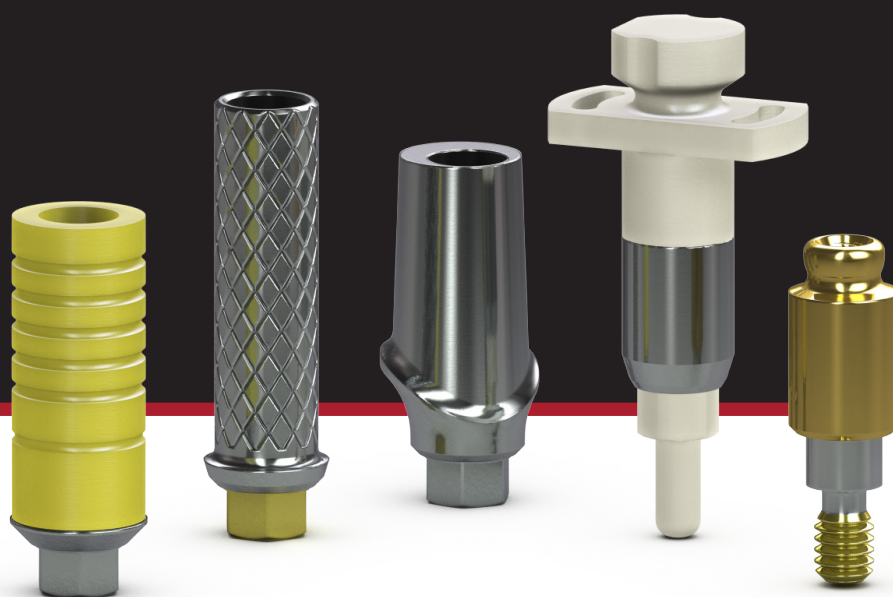


Table of Contents

Introduction	2-3
Healing Abutments	4
Temporary Abutments	5
Impression Components	6-8
Custom & CAD/CAM Abutments	9-10
Multi-unit Abutments	11
Multi-unit Components	12-15
Esthetic & Cementable Abutments	16-17
Overdenture Abutments & Components	18
Prosthetic Instrumentation	19

HEALING ABUTMENTS

Healing Abutments

Narrow, Regular and Wide emergences allow for customization of soft tissue profile during healing. Varying buccal height accommodate for gingival thickness. Hand-tighten with the .050 Hex Driver. Titanium Alloy.



Product Description

Ref. No.

Grey Healing Abutment, Narrow, 3mm Height **HA-GY-N3**

Grey Healing Abutment, Narrow, 5mm Height **HA-GY-N5**



Product Description

Ref. No.

Grey Healing Abutment, Regular, 3mm Height **HA-GY-R3**

Grey Healing Abutment, Regular, 5mm Height **HA-GY-R5**

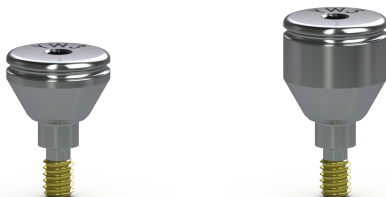


Product Description

Ref. No.

Yellow Healing Abutment, Regular, 3mm Height **HA-YW-R3**

Yellow Healing Abutment, Regular, 5mm Height **HA-YW-R5**



Product Description

Ref. No.

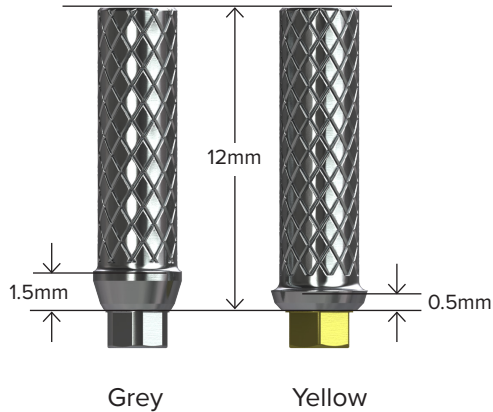
Yellow Healing Abutment, Wide, 3mm Height **HA-YW-W3**

Yellow Healing Abutment, Wide, 5mm Height **HA-YW-W5**

**TEMPORARY
ABUTMENTS**

Titanium Temporary Abutments

Use hexed for single-unit, screw-retained, long term temporary restorations (>30 days). Use non-hexed for multiple-unit, screw-retained, long term temporary restorations (>30 days). Packaged with an abutment screw (AS). Titanium Alloy. Final torque: 30Ncm.



Product Description

Ref. No.

Grey Titanium Temporary Abutment, Hexed	TA-GY-TH
Grey Titanium Temporary Abutment, Non-hexed	TA-GY-TN

Product Description

Ref. No.

Yellow Titanium Temporary Abutment, Hexed	TA-YW-TH
Yellow Titanium Temporary Abutment, Non-hexed	TA-YW-TN

PEEK Temporary Cylinder Abutments

Use for fabrication of cement- or screw-retained provisional restorations (up to 30 days). A direct coping screw (IC-S, purchased separately) may be used to maintain screw access hole during fabrication of screw-retained provisional prostheses. Packaged with an abutment screw (AS). PEEK (PolyEtherEtherKetone) material. Final torque: 30Ncm.



Product Description

Ref. No.

Grey PEEK Temporary Cylinder Abutment, Hexed	TA-GY-PH
Grey PEEK Temporary Cylinder Abutment, Non-hexed	TA-GY-PN

Product Description

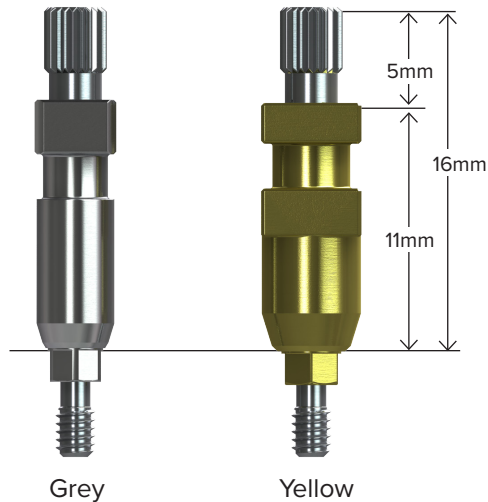
Ref. No.

Yellow PEEK Temporary Cylinder Abutment, Hexed	TA-YW-PH
Yellow PEEK Temporary Cylinder Abutment, Non-hexed	TA-YW-PN

IMPRESSION COMPONENTS

Impression Copings

Use to make an open-tray, implant-level impression. Non-hexed versions may also be used to fabricate multiple-unit bars. Titanium Alloy. Hand-tighten.



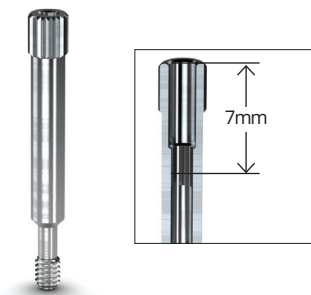
Product Description	Ref. No.
Yellow Impression Coping, Narrow, Non-hexed	IC-YW-ONN

Product Description	Ref. No.
Grey Impression Coping, Regular, Hexed	IC-GY-ORH
Grey Impression Coping, Regular, Non-hexed	IC-GY-ORN

Product Description	Ref. No.
Yellow Impression Coping, Regular, Hexed	IC-YW-ORH

Product Description	Ref. No.
Yellow Impression Coping, Wide, Hexed	IC-YW-OWH

Direct Coping Screws



Product Description	Ref. No.
Impression Coping Screw	IC-S

Includes a 7mm deep hex that allows the screw to be prepped without losing engagement. May also be used in place of an abutment screw (AS) when extra length is needed, or to maintain the screw access hole during fabrication of a screw-retained provisional prostheses. Utilizes the .050" Hex Driver. Hand-tighten or torque to 30 Ncm depending on application. Titanium Alloy.

Product Description	Ref. No.
Impression Coping Screw, Long	IC-SL

IC-SL has the same deep hex as the IC-S and is 5mm longer. May also be used in place of an abutment screw (AS) when extra length is needed, or to maintain the screw access hole during fabrication of a screw-retained provisional prostheses. Utilizes the .050" Hex Driver. Hand-tighten or torque to 30 Ncm depending on application. Titanium Alloy.

**IMPRESSION
COMPONENTS**

Implant Analogs

Use in the lab to represent the implant in the working cast or printed model. Titanium Alloy.



Product Description	Ref. No.
Grey Implant Analog	IA-GY

Product Description	Ref. No.
Yellow Implant Analog	IA-YW

Contour Abutment, Ball Top Screw

Use with the Dual Purpose Abutment to form an impression coping for closed-tray, hexed-timed transfers. Hand-tighten. Titanium Alloy.



Product Description	Ref. No.
Contour Abutment, Ball Top Screw	CA-BS

Abutment Screw

Fits both implant prosthetic platforms. Low profile screw head. Packaged with all two-piece abutments, except Multi-unit and Titanium Base abutments that are packaged with the light blue MU-AS. Utilizes the .050" Hex Driver. Titanium Alloy. Final torque: 30 Ncm.



Product Description	Ref. No.
Abutment Screw	AS

Snap Scan Body

Use for traditional closed tray impressions or intra-oral scanning. PEEK (PolyEtherEtherKetone) and Titanium Alloy material.

Note: Prior to scanning, verify that the scan abutment is available in the library of the design software that will be used to design the abutment.



Product Description

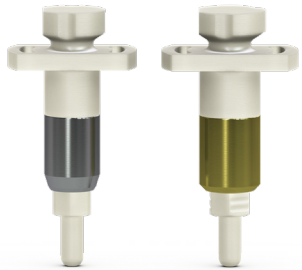
Ref. No.

Grey Snap Scan Body, 8mm Height

SB-GY-8

Yellow Snap Scan Body, 8mm Height

SB-YW-8



Product Description

Ref. No.

Grey Snap Scan Body, 11mm Height

SB-GY-11

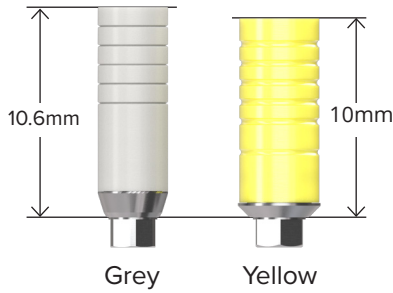
Yellow Snap Scan Body, 11mm Height

SB-YW-11

**CUSTOM & CAD/CAM
ABUTMENTS**

Custom Cast Abutments

Use hexed abutments for single-unit, screw-retained or cement-retained, custom abutment restorations. Use non-hexed abutments for multiple-unit, screw-retained restorations. Packaged with an abutment screw (AS) and polishing protector. Gold Alloy base with acetal resin (Delrin® or Pomalux®) sleeve. Color-coded by platform. Final torque: 30Ncm.



Product Description	Ref. No.
Grey Custom Cast Abutment, Hexed	CC-GY-H
Grey Custom Cast Abutment, Non-hexed	CC-GY-N

Product Description	Ref. No.
Yellow Custom Cast Abutment, Hexed	CC-YW-H
Yellow Custom Cast Abutment, Non-hexed	CC-YW-N

Custom Cast Abutments, Plastic

Use hexed abutments for single-unit, screw-retained or cement-retained, custom abutment restorations. Use non-hexed abutments for multiple-unit, screw-retained restorations. Packaged with an abutment screw (AS). Acetal resin (Delrin® or Pomalux®) sleeve. Final torque: 30Ncm.



Product Description	Ref. No.
Yellow Custom Cast Abutment, Plastic, Hexed	CC-YW-PH
Yellow Custom Cast Abutment, Plastic, Non-hexed	CC-YW-PN

Single-use Polishing Protector

Use to protect the abutment connection during preparation of the abutment. Abutment is secured using the standard abutment screw (AS).

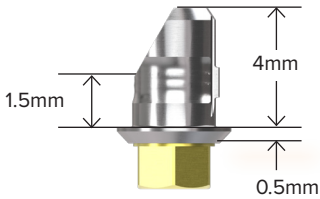


Product Description	Ref. No.
Grey Single-use Polishing Protector	PP-GY-SU
Yellow Single-use Polishing Protector	PP-YW-SU

CUSTOM & CAD/CAM ABUTMENTS

Titanium Base Abutments

Use hexed abutments for single-unit, screw-retained or cement-retained, CAD/CAM hybrid zirconia restorations. Use non-hexed abutments for multiple unit, screw-retained CAD/CAM hybrid zirconia restorations. Abutments have an internal thread to capture the abutment screw (MU-AS). Titanium Alloy for strength. Final torque: 30Ncm.



final version
provided by the lab

Product Description

Ref. No.

Grey Titanium Base Abutment, Hexed

TB-GY-H

Grey Titanium Base Abutment, Non-hexed

TB-GY-N

Product Description

Ref. No.

Yellow Titanium Base Abutment, Hexed

TB-YW-H

Yellow Titanium Base Abutment, Non-hexed

TB-YW-N



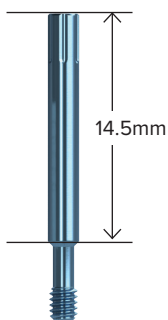
Notes

Titanium Base Abutments packaged with MU-AS (light blue) abutment screw.

Waxing Sleeve & Block-out Screws



TB-WS



TB-BS

Product Description

Ref. No.

Waxing Sleeve, Grey & Yellow (Pack of 3)

TB-WS

Use as a foundation to create a full contour wax-up for a lithium disilicate glass-ceramic pressed crown. Packaged in packs of three. Acetal resin (Delrin® or Pomalux®) sleeve.

Product Description

Ref. No.

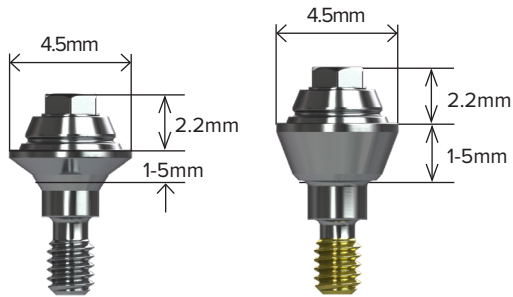
Block-out Screw

TB-BS

MULTI-UNIT
ABUTMENTS

Straight Multi-unit Abutments

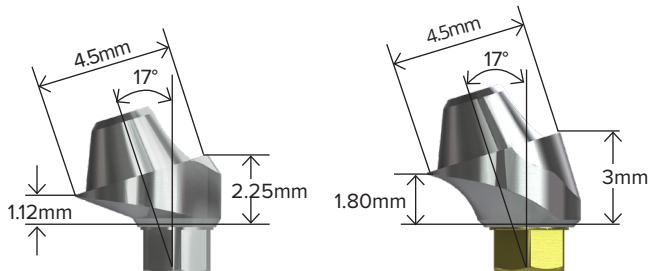
Straight Multi-unit abutments may be used for multiple-unit restorations including: screw-retained restorations at the abutment level, cast alloy bars for overdentures and fixed/detachable (hybrid) restorations. Comes with a cover cap (MU-CC). Final torque: 30 Ncm using a Multi-unit Hex Adapter. Titanium alloy.



1mm collar	2mm collar	3mm collar	4mm collar	5mm collar	platform
MU-GY-S1	MU-GY-S2	MU-GY-S3	-	-	Grey
MU-YW-S1	MU-YW-S2	MU-YW-S3	MU-YW-S4	MU-YW-S5	Yellow

17° Angled Multi-unit Abutments

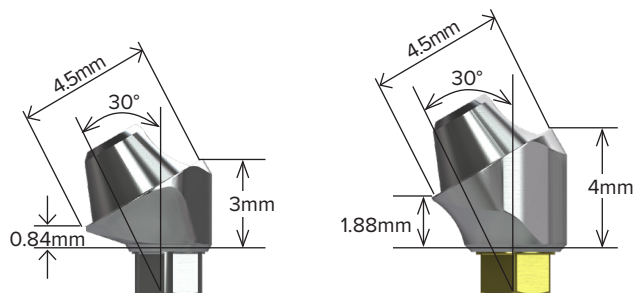
17° Angled Multi-unit abutments may be used to angle-correct divergent implants. Use for multiple-unit restorations including: screw-retained restorations at the abutment level, cast alloy bars for overdentures and fixed/detachable (hybrid) restorations. Comes with a cover cap (MU-CC) and abutment screw (MU-AS). Final torque: 30 Ncm. Titanium alloy. Conveniently deliver abutment one-handed using an .050 hex driver or two-handed using an angled Multi-unit carrier (MU-AAC).



2.25mm collar	3mm collar	4mm collar	platform
MU-GY-172	MU-GY-173	-	Grey
MU-YW-172	MU-YW-173	MU-YW-174	Yellow

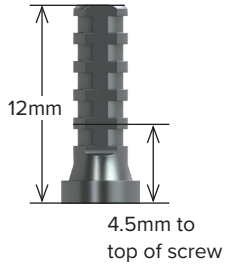
30° Angled Multi-unit Abutments

30° Angled Multi-unit abutments may be used to angle-correct divergent implants. Use for multiple-unit restorations including: screw-retained restorations at the abutment level, cast alloy bars for overdentures and fixed/detachable (hybrid) restorations. Comes with a cover cap (MU-CC) and abutment screw (MU-AS). Final torque: 30 Ncm. Titanium alloy. Conveniently deliver abutment one-handed using an .050 hex driver or two-handed using an angled Multi-unit carrier (MU-AAC).



3mm collar	4mm collar	5mm collar	platform
MU-GY-303	MU-GY-304	-	Grey
MU-YW-303	MU-YW-304	MU-YW-305	Yellow

Multi-unit Copings



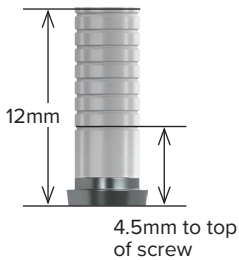
Product Description

Ref. No.

Titanium

MU-TC

Use for fabricating acrylic temporary and final prostheses. May be trimmed for height. Packaged with prosthetic screw (MU-PSR). Titanium alloy.



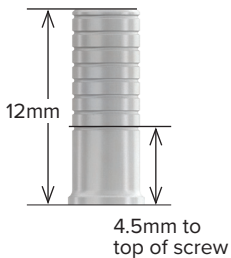
Product Description

Ref. No.

Gold Custom Castable

MU-GC

Use for fabricating metal-reinforced acrylic prostheses or bar overdentures. May be trimmed for height. Packaged with prosthetic screw (MU-PSR). Coping has a gold alloy base with acetal resin (Delrin[®] or Pomalux[®]) sleeve.



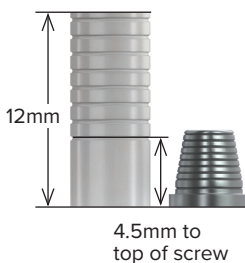
Product Description

Ref. No.

Plastic Custom Castable

MU-PC

Use for fabricating metal-reinforced acrylic prostheses or bar overdentures. May be trimmed for height. Packaged with prosthetic screw (MU-PSR). Acetal resin (Delrin[®] or Pomalux[®])



Product Description

Ref. No.

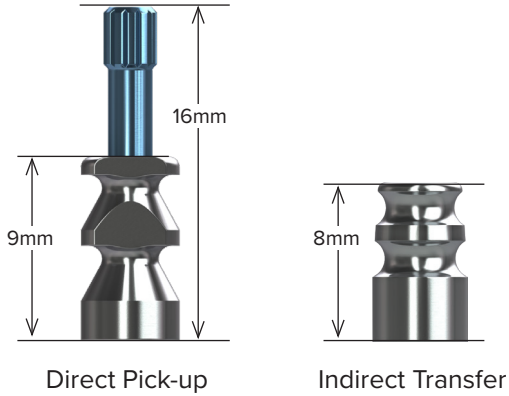
Passive Fit

MU-PFC

Use for fabricating metal-reinforced acrylic prostheses or bar overdentures, cemented using the passive-fit technique. May be trimmed for height. Packaged with regular and long prosthetic screws (MU-PSR and MU-PSL). Coping has a titanium alloy base with acetal resin (Delrin[®] or Pomalux[®]) sleeve.

**MULTI-UNIT
COMPONENTS**

Multi-unit Impression Copings



Product Description

Ref. No.

Multi-unit Direct Pick-up Coping

MU-DC

Use to make a direct pick-up impression (open-tray) at the abutment level.
Titanium alloy. Hand tighten.

Product Description

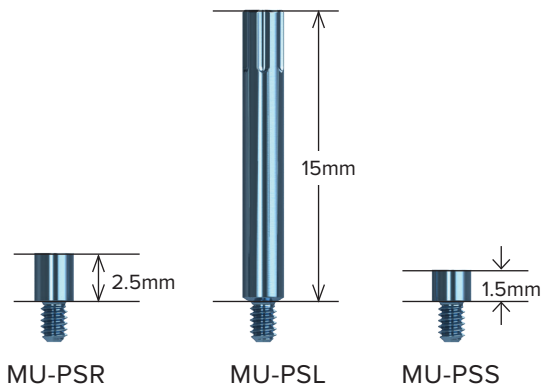
Ref. No.

Multi-unit Indirect Transfer Coping

MU-IC

Use to make an indirect transfer (closed-tray) impression at the abutment level.
Titanium alloy. Hand tighten.

Multi-unit Coping Screws



Product Description

Ref. No.

Multi-unit Prosthetic Screw, Regular (pack of 5)

MU-PSR

Multi-unit Prosthetic Screw, Long (pack of 5)

MU-PSL

Multi-unit Prosthetic Screw, Short (pack of 5)

MU-PSS

For attaching copings to the Multi-unit abutments. Hand-tighten or torque to 15 Ncm with .050" Hex Driver, depending on application. Titanium alloy. Included with copings where indicated but can also be ordered separately.

**MULTI-UNIT
COMPONENTS**

Multi-unit Abutment Screw & Carrier



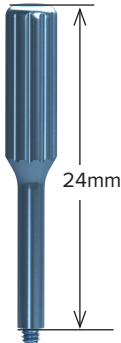
Product Description

Ref. No.

Multi-unit Abutment Screw

MU-AS

For angled Multi-unit abutments only. Final torque: 30 Ncm with .050" Hex Driver. Titanium alloy. Included with abutment but can also be ordered separately.



Product Description

Ref. No.

Multi-unit Angled Abutment Carrier (pack of 3)

MU-AAC

Use to deliver angled Multi-unit abutments to the surgical site. Titanium alloy.

Multi-unit Cover Caps



Product Description

Ref. No.

Multi-unit Cover Cap

MU-CC

Packaged with all Multi-unit abutments. Hand-tighten with .050" Hex Driver. Titanium alloy.

Multi-unit Abutment Replica & Protective Analog



Product Description

Ref. No.

Multi-unit Abutment Replica

MU-AR

Use at lab to represent the Multi-unit/Implant assembly in the working cast or printed model. Not for use with implant-level impressions. Titanium alloy.



Product Description

Ref. No.

Multi-unit Protection Analog (pack of 5)

MU-PA

Use to protect abutment-coping interface when polishing the metal framework. Titanium alloy.

**MULTI-UNIT
COMPONENTS**

Multi-unit Hex Adapters for Straight Abutments



Manual



Handpiece



4mm Square

Product Description

Multi-unit Manual Hex Adapter

Ref. No.

MU-HAM

Use to hand tighten straight Multi-unit abutments.

Product Description

Multi-unit Handpiece Hex Adapter

Ref. No.

MU-HAH

Use to torque straight Multi-unit abutments. Driven by latch-type hand-piece. Do not exceed 30 Ncm.

Product Description

Multi-unit 4mm Square Hex Adapter

Ref. No.

MU-HAR

Use to torque straight Multi-unit abutments. Driven by 4mm square handwrench, ratchet, or torque wrench. Do not exceed 30 Ncm.

Paralleling Pin



Product Description

Straight Parallel Pin

Ref. No.

PP-2025

Use parallel pins to assess implant angulation.

Angled Contour Abutments

Use to create a cement-retained, single- or multiple-unit prostheses. Packaged with an abutment screw (AS). Contour Abutments do not utilize anodization on the hex for color coding. Please use the abutment packaging for identifying the compatible implant platform. Titanium Alloy. Final torque: 30Ncm.



Product Description

Grey Angled Contour Abutment

Yellow Angled Contour Abutment

Ref. No.

CA-GY-A

CA-YW-A

Straight Contour Abutments

Use to create a cement-retained, single- or multiple-unit prostheses. Packaged with an abutment screw (AS). Contour Abutments do not utilize anodization on the hex for color coding. Please use the abutment packaging for identifying the compatible implant platform. Titanium Alloy. Final torque: 30Ncm.



Product Description

Grey Straight Contour Abutment

Yellow Straight Contour Abutment

Ref. No.

CA-GY-S

CA-YW-S

Straight Contour Abutments (3mm buccal height)

Use to create a cement-retained, single- or multiple-unit prostheses. Packaged with an abutment screw (AS). Contour Abutments do not utilize anodization on the hex for color coding. Please use the abutment packaging for identifying the compatible implant platform. Titanium Alloy. Final torque: 30Ncm.



Product Description

Grey Straight Contour Abutment (3mm buccal height)

Yellow Straight Contour Abutment (3mm buccal height)

Ref. No.

CA-GY-S3

CA-YW-S3

Dual Purpose Abutments

Use to fabricate cement-retained, single- or multiple-unit prostheses. Also used with a Ball-top Screw for a closed-tray, hex-timed transfer. Contour Abutments do not utilize anodization on the hex for color coding. Please use the abutment packaging for identifying the compatible implant platform. Packaged with an abutment screw (AS). Titanium Alloy. Final torque: 30Ncm.



Product Description

Grey Dual Purpose Abutment

Yellow Dual Purpose Abutment

Ref. No.

CA-GY-DP

CA-YW-DP

Angled Abutment

Use to fabricate cement-retained, single- or multiple-unit prostheses. Contour Abutments do not utilize anodization on the hex for color coding. Please use the abutment packaging for identifying the compatible implant platform. Packaged with an abutment screw (AS). Titanium Alloy. Final torque: 30Ncm.



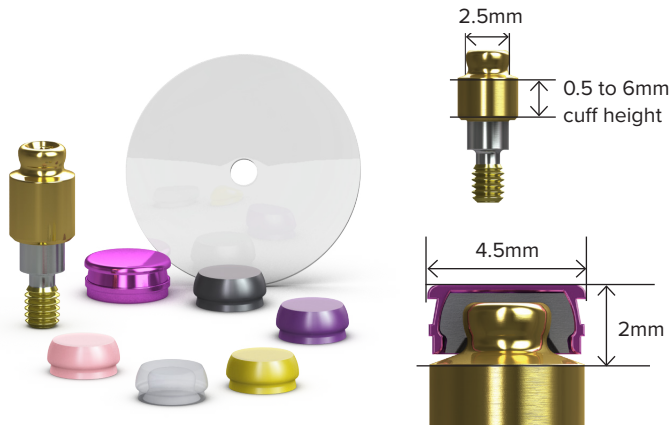
Product Description

Yellow Angled Abutment

Ref. No.

CA-YW-A20

Overdenture Abutment System



Grey platform	Yellow platform	cuff height
OD-GY-1	OD-YW-1	1mm
OD-GY-2	OD-YW-2	2mm
OD-GY-3	OD-YW-3	3mm
OD-GY-4	OD-YW-4	4mm
OD-GY-5	OD-YW-5	5mm

Overdenture abutments come packaged with the abutment, metal housing, four retentive inserts, a lab processing insert and a protection disk.

Overdenture Abutment Components



Product Description	Ref. No.
Overdenture Increased Angle Housing Cap (2 pack)	OD-IAHC

Increased angle Housing Cap is assembled with Lab Processing Insert and is used to correct up to 50° of divergence.



Product Description	Ref. No.
Overdenture Increased Angle Lab Processing Insert (4 pack)	OD-IAPI



Product Description	Ref. No.
Overdenture Retention Cap Insert (Violet) (Strong) (4 pack) Retention: 6lbs	OD-RC-V



Product Description	Ref. No.
Overdenture Retention Cap Insert (Clear) (Standard) (4 pack) Retention: 4lbs	OD-RC-C



Product Description	Ref. No.
Overdenture Block-out Spacer (4 pack)	OD-BOS



Product Description	Ref. No.
Overdenture Impression Coping (2 pack)	OD-IC



Product Description	Ref. No.
Overdenture Cap Assortment Kit (2 pack)	OD-CAK



Product Description	Ref. No.
Housing Cap (2 pack)	OD-HC

Housing Cap comes assembled with Lab Processing Insert.



Product Description	Ref. No.
Overdenture Retention Cap Insert (Pink) (Soft) (4 pack) Retention: 2.5lbs	OD-RC-P



Product Description	Ref. No.
Overdenture Retention Cap Insert (Yellow) (Extra Soft) (4 pack) Retention: 1.5lbs	OD-RC-Y



Product Description	Ref. No.
Overdenture Lab Process Insert (Black) (4 pack)	OD-PI-B



Product Description	Ref. No.
Overdenture Analog (2 pack)	OD-A



Product Description	Ref. No.
Overdenture Castable Male (2 pack)	OD-CM



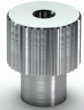
Product Description	Ref. No.
Overdenture Cap Insert/Extractor Tool	OD-CT

**PROSTHETIC
INSTRUMENTATION**

Wrenches & Drive Extenders



Product Description	Ref. No.
Ratchet and Hand Wrench Extender	RE-4MM



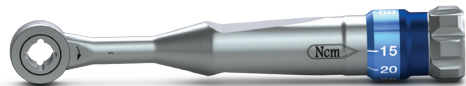
Product Description	Ref. No.
Hand Wrench	HW-4MM

Product Description	Ref. No.
Intra-Lock Prosthetic Tray	IL-PT

Tray without instruments



Product Description	Ref. No.
30N-cm Torque Wrench	300-430



Product Description	Ref. No.
ITL Precise Adjustable Torque Wrench	ATW

Place both implants and abutments with 9 distinct torque settings (15, 20, 25, 30, 35, 40, 45, 50 and 60 Ncm). A simple twist of the handle locks in precision-engineered torque values and guarantees accuracy and repeatability.

.050 Hex Drivers



8.5mm

Manual



11.5mm

Handpiece



6.25mm 19mm

4mm Square

Product Description	Ref. No.
.050 Hex Driver, Manual	HD-MAN
.050 Hex Driver, Handpiece	HD-ISO
.050 Hex Driver, 4mm Square, Short	HD-4MMS
.050 Hex Driver, 4mm Square, Long	HD-4MML

For installation and removal of cover caps, prosthetic and abutment screws.

Clean-out Tools



Product Description	Ref. No.
Clean-out Tap Tool	CTT

Use CTT to re-thread internal connection implants. Requires a standard surgical Ratchet (R-4MM) or Hand Wrench (HW-4MM) as a drive mechanism.

1. Nanometer-Scale Features on Micrometer-Scale Surface Texturing: A bone Histological, Gene Expression, and Nano Mechanical Study.
Paulo G. Coelho, Tadahiro Takayama, Daniel Yoo, Ryo Jimbo, Sanjay Karunakaran, Nick Tovar, Malvin N. Janal, Seiichi Yamano.
Bone, Issue 65, Aug. 2014. R13009a
2. The effect of implant design on insertion torque and immediate micromotion.
Amilcar C. Freitas Jr, Estevam A. Bonfante, Gabriela Giro, Malvin N. Janal, Paulo G. Coelho.
Clin. Oral Impl. Res. 10.1111/j. 1600-0501.2010.02142.x c_ 2011 John Wiley & Sons A/S. R13013b
3. The impact of a modified cutting flute implant design on osseointegration.
R. Jimbo, N. Tovar, C. Marin, H. S. Teixeira, R. B. Anchieta, L. M. Silveira, M. N. Janal, J. A. Shibli, P. G. Coelho.
Int. J. Oral Maxillofac. Surg. 2014; 43: 883–88 In-Press #2014
International Association of Oral and Maxillofacial Surgeons. Published by Elsevier Ltd. R13012a
4. Identification card and codification of the chemical and morphological characteristics of 14 dental implant surfaces.
David Marcel Dohan Ehrenfest, DDS, MS, PhD, Lydia Vazquez, Yeong-Joon Park, Gilberto Sammartino, and Jean-Pierre Bernard Chonnam.
National University School of Dentistry, LoB5 unit, School of Dentistry, Gwangju, South Korea
Journal of Oral Implantology: October 2011, Vol. 37, No. 5, pp. 525-542. R13006b
5. Classification of Osseointegrated Implant Surfaces: Materials, Chemistry and Topography.
David M. Dohan Ehrenfest, Paulo G. Coelho, Byung-Soo Kang, Young-Taeg Sul and Tomas Albrektsson.
Trends Biotechnol. 2010 Apr;28(4):198-206. Epub 2010 Jan 29. R13004r
6. Basic Research Methods and Current Trends of Dental Implant Surfaces.
Paulo G. Coelho, Jose M. Granjeiro, George E. Romanos, Marcelo Suzuki, Nelson R. F. Silva, Giuseppe Cardaropoli, Van P. Thompson, Jack E. Lemons.
J Biomed Mater Res B Appl Biomater. 2009 Feb;88(2):579-96. doi: 10.1002/jbm.b.31264. R13002r
7. Histomorphometric Evaluation of Bioceramic Molecular Impregnated and Dual Acid-Etched Implant Surfaces in the Human Posterior Maxilla.
Jamil Awad Shibli, DDS, MS, PhD; Sauro Grassi, DDS, MS; Adriano Piattelli, MD, DDS; Gabriele E. Pecora, MD, DDS; Daniel S. Ferrari, DDS, MS; Tatiana Onuma, DDS; Susana d'Avila, DDS, MS, PhD; Paulo G. Coelho, DDS, PhD; Raquel Barros, DDS, MS; Giovanna Iezzi, DDS, PhD.
Clinical Implant Dentistry and Related Research. Published Online: 28 Apr 2009 in Wiley Inter Science
© 2010 Wiley Periodicals, Inc. R13003c



Intra-Lock®, Osseon® and Blossom® are Registered Trademarks of BioHorizons
Fusion is a Trademark of BioHorizons