

# SmartShape™ Healers

streamlined clinical performance



BIOHORIZONIS®



# SmartShape™ Healers

streamlined clinical performance

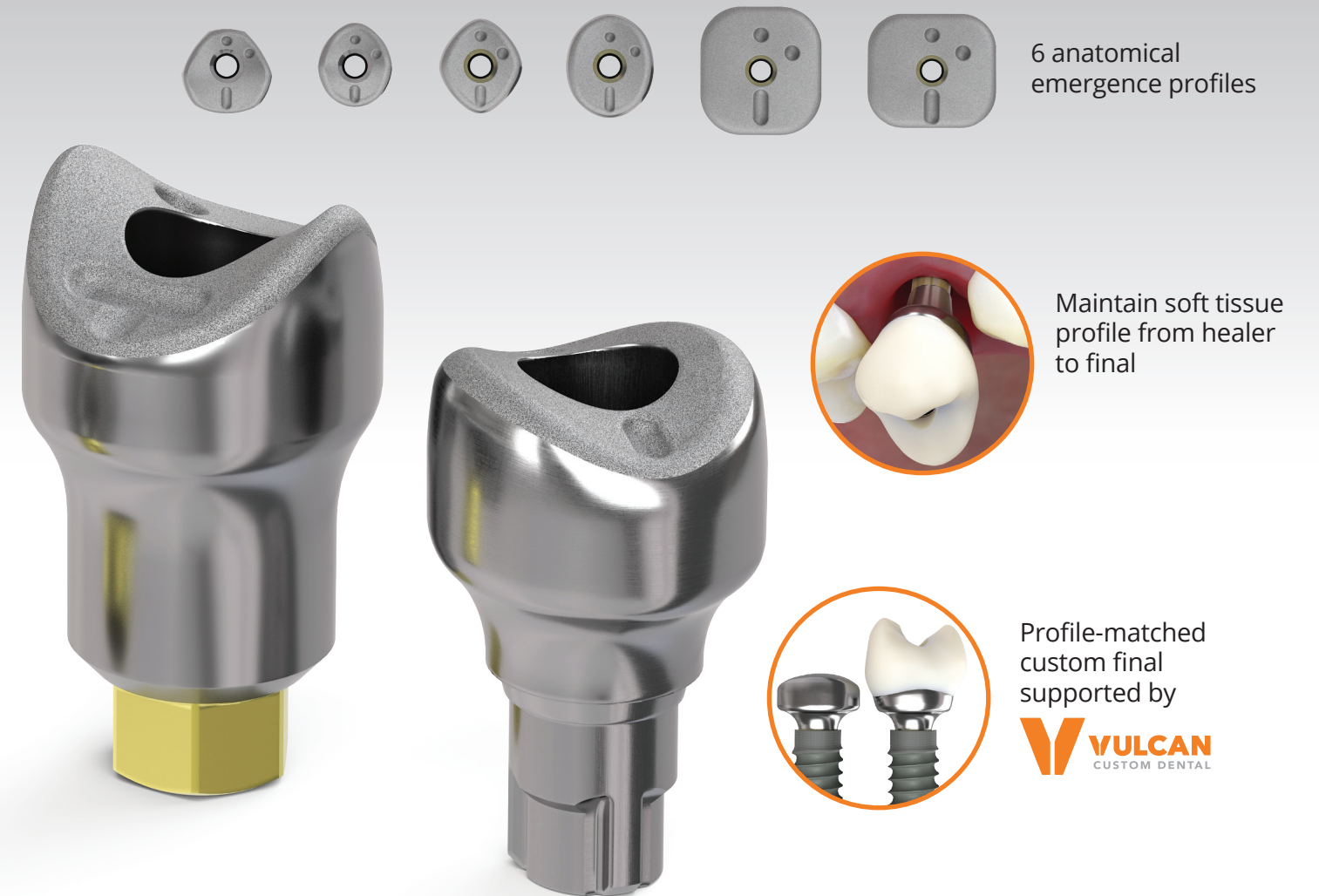
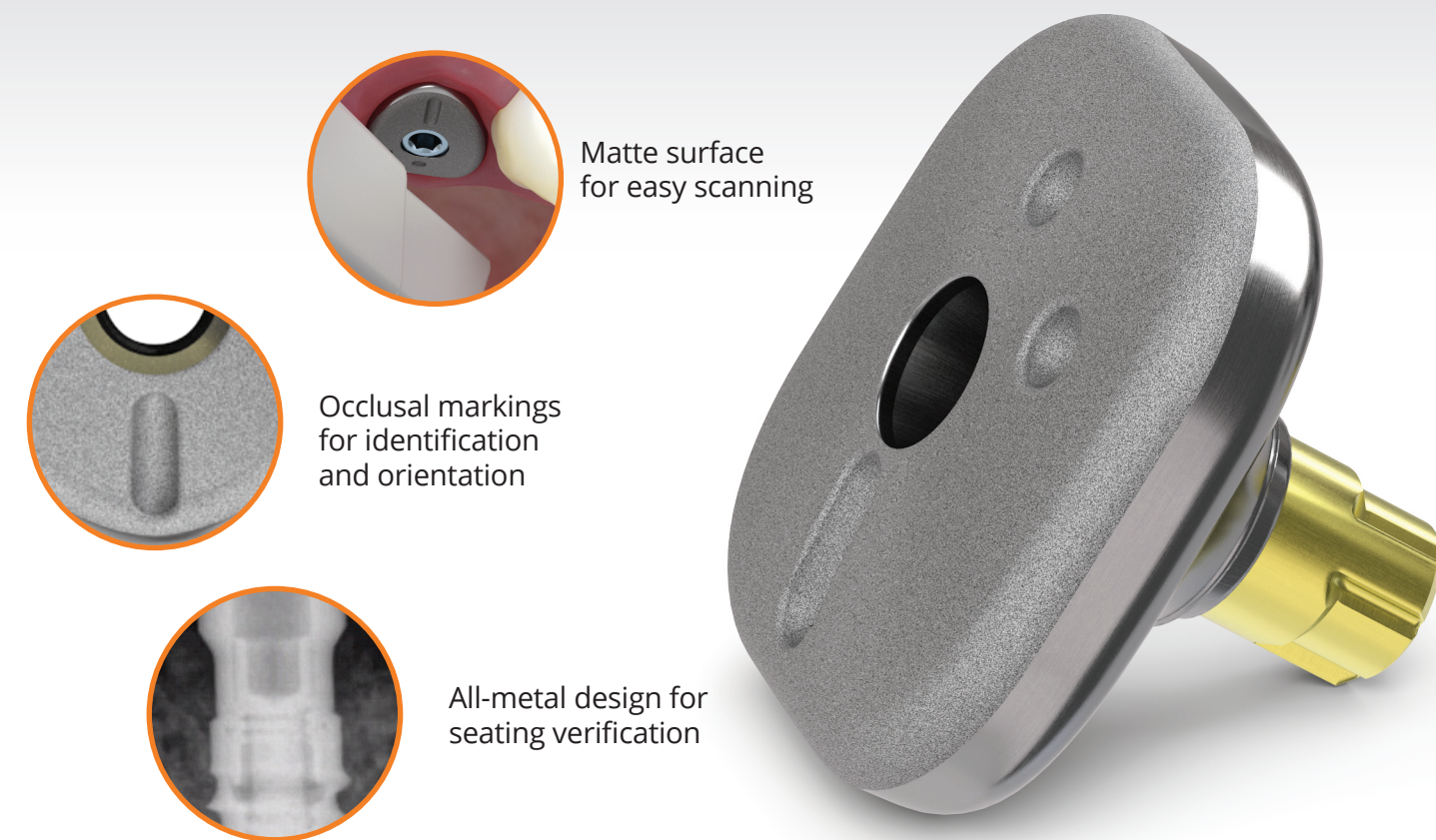
Designed to simplify treatment workflows and deliver superior esthetic outcomes

**Innovative:** Anatomically shaped healing abutments with scannable design

**Esthetic:** Site-specific configurations to optimize gingival contouring

**Efficient:** Streamlined components and reduced chairtime for restorative workflows

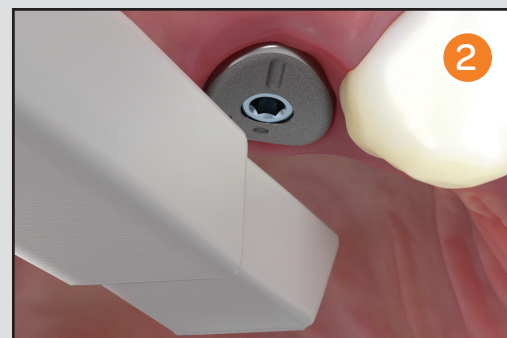
**Flexible:** Supports traditional and digital impression-taking for a profile-matched custom final



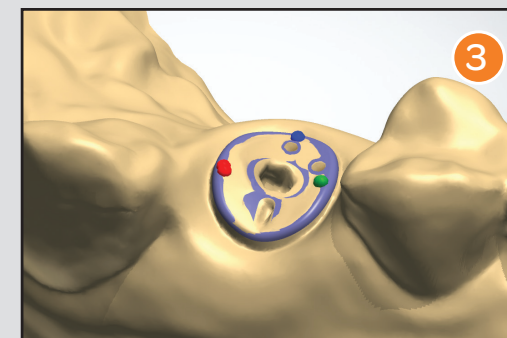
## SmartShape Healer workflow



**1** Place SmartShape Healer. Leave 0.5mm of abutment above the tissue for impressing.



**2** Take an impression of the abutment using a digital scanner or traditional closed-tray workflow.

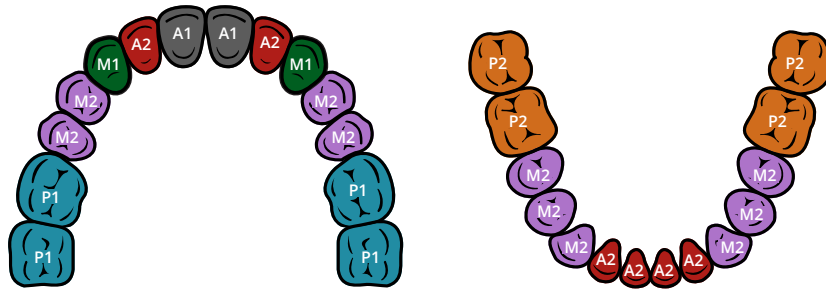


**3** Align scan body file with digital impression using selection points along the occlusal profile.

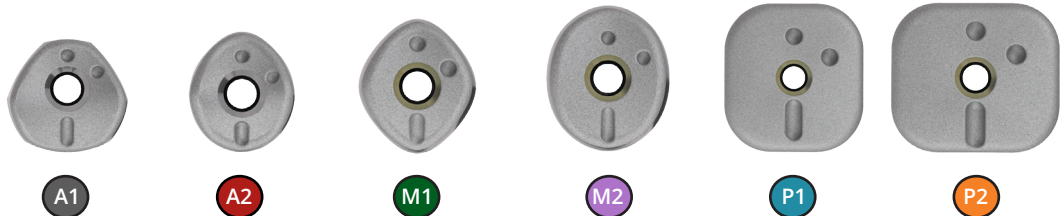


**4** Design custom final that matches the SmartShape anatomical profile.

- Anterior 1 (A1)
- Anterior 2 (A2)
- Mid 1 (M1)
- Mid 2 (M2)
- Posterior 1 (P1)
- Posterior 2 (P2)

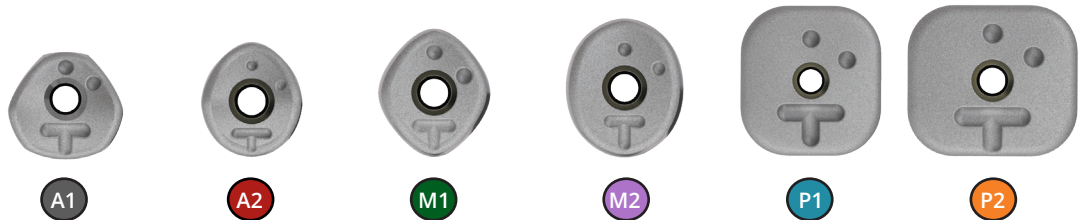


## Regular height



Hexed		3.0mm	TP3SSHA1	TP3SSHA2	TP3SSHM1	TP3SSHM2	-	-
		3.5mm	PYSSHA1	PYSSHA2	PYSSHM1	PYSSHM2	PYSSHP1	PYSSHP2
		4.5mm	-	-	-	PGSSHM2	PGSSHP1	PGSSHP2
		5.7mm	-	-	-	-	PBSSHP1	PBSSHP2
Conical		Narrow	CNSSHA1	CNSSHA2	CNSSHM1	CNSSHM2	-	-
		Regular	CRSSHA1	CRSSHA2	CRSSHM1	CRSSHM2	CRSSHP1	CRSSHP2

## Tall height\*



Hexed		3.0mm	TP3SSHA1T	TP3SSHA2T	TP3SSHM1T	TP3SSHM2T	-	-
		3.5mm	PYSSHA1T	PYSSHA2T	PYSSHM1T	PYSSHM2T	PYSSHP1T	PYSSHP2T
		4.5mm	-	-	-	PGSSHM2T	PGSSHP1T	PGSSHP2T
		5.7mm	-	-	-	-	PBSSHP1T	PBSSHP2T
Conical		Narrow	CNSSHA1T	CNSSHA2T	CNSSHM1T	CNSSHM2T	-	-
		Regular	CRSSHA1T	CRSSHA2T	CRSSHM1T	CRSSHM2T	CRSSHP1T	CRSSHP2T

