



Bite registration

The bite registration is taking an impression of a patient's upper and lower teeth in the bite position to assist in the making and fitting of restorations.

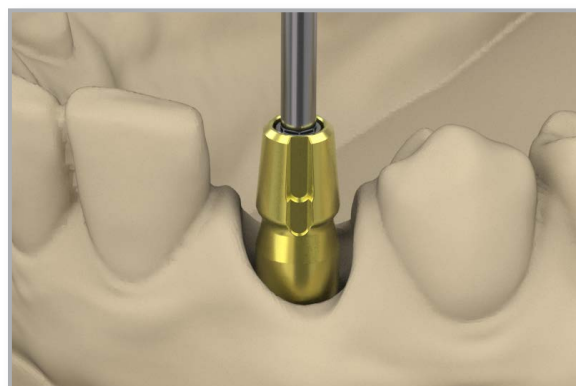


component options

- Conical impression post, closed tray (including coping screw)
- Conical bite registration cap
- Stone impression models (lab analogs embedded)
- .050" (1.25mm) hex driver

1 Place the impression post

Place the conical impression post on the lab analog embedded in the stone model. Hand tighten the impression post using the coping screw and the .050" hex driver.



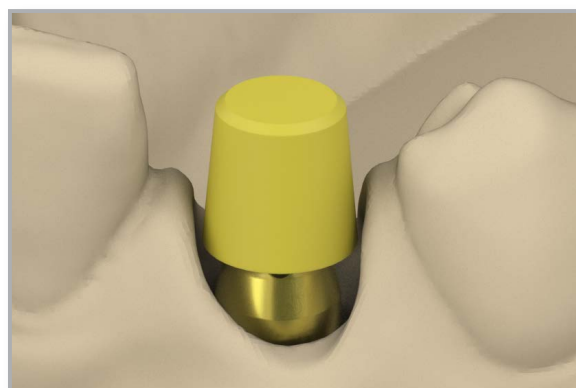
2 Install bite registration cap

Install the bite registration cap on the impression post. Ensure that the bite registration cap is fully seated on the impression post.



Note:

Correct seating of the bite registration cap on the impression post is indicated by a perceptible locking feel.



3 Perform bite registration

Mount the stone models in an articulator tool and place the bite register. Perform the bite registration using a tabletop scanner.

