

fabricating a custom impression coping using the closed tray technique



BIOHORIZONS[®]
SCIENCE • INNOVATION • SERVICE



fabricating a custom impression coping using the closed tray technique

Use this technique to fabricate a customized, closed-tray, indirect impression coping that transfers the soft tissue contour developed by a temporary restoration. This procedure will provide a model representing the position of the implant and hex orientation as well as the soft tissue contour.

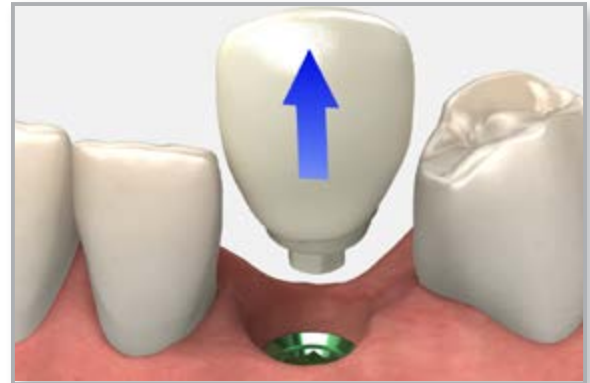


component options

- indirect scoop coping, narrow coping
- implant analog
- .050" (1.25mm) hex driver

1 Remove the temporary

Remove the temporary prosthesis. Confirm that the prosthetic platform is free of any bone debris or soft tissue.



2 Place an impression coping

Place composite adhesive on a narrow emergence closed tray impression coping in the anticipated emergence profile area and light cure.

Seat the impression coping onto the implant using the pre-assembled coping screw and an .050" (1.25mm) hex driver.

Take a radiograph along the long axis of the implant to ensure that the impression coping is seated completely onto the implant.



Note:
The X-ray tube must be positioned perpendicular to the implant prosthetic platform.



3 Inject and cure the composite

Inject a flowable light cure composite around the impression coping filling the contoured sulcus. Light cure the composite.

Block out the hex hole on the top of the coping screw using a material of choice.

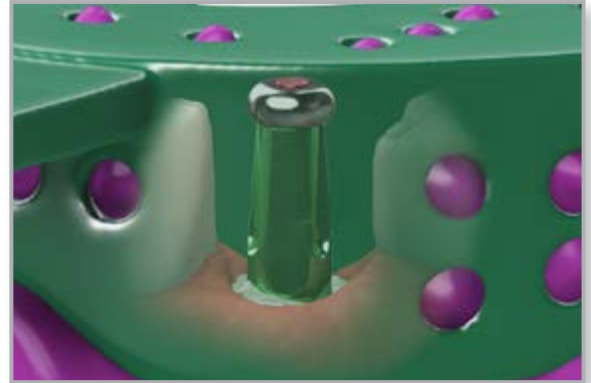




fabricating a custom impression coping using the closed tray technique

4 Make a full-arch impression

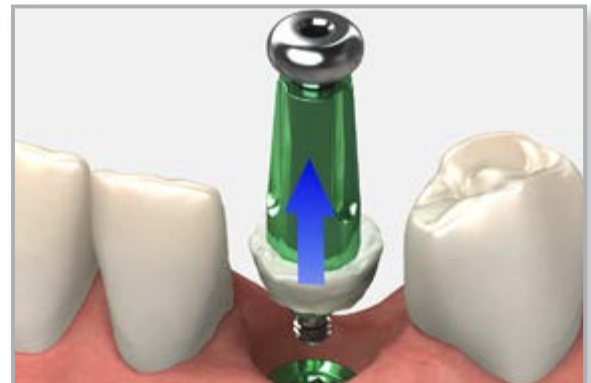
Syringe a medium or heavy body elastomeric impression material around the custom impression coping body. Load the tray with impression material and make an impression.



5 Remove the impression & coping

After the impression material has set, remove the tray from the mouth. The custom indirect transfer coping will remain in the mouth.

Remove the transfer coping and replace the temporary prosthesis immediately to prevent the possibility of soft tissue collapsing onto the implant.



send to lab

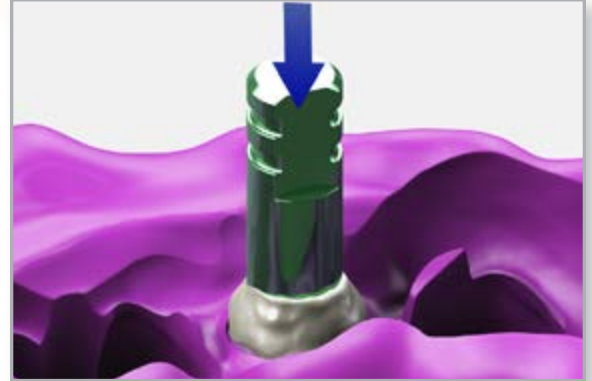
- impression
- custom indirect impression coping
- bite registration
- opposing model or impression
- implant analog
- prescription with lab instructions



fabricating a custom impression coping using the closed tray technique

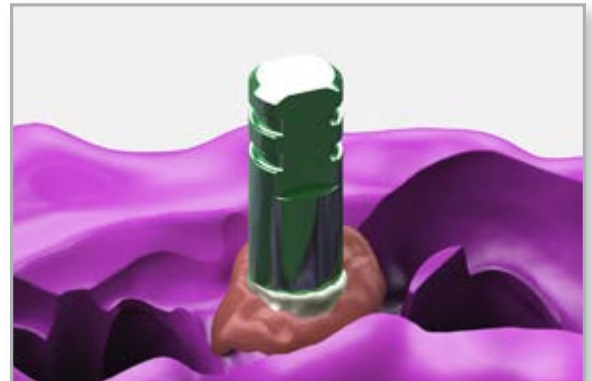
6 Lab step - Attach the analog to the coping

Attach the implant analog to the custom indirect transfer coping using an .050" (1.25mm) hex driver. Hand tighten. Insert the coping assembly into the corresponding location in the impression, ensuring that the grooves or temporary crown countour align with the corresponding indices in the impression.



7 Lab step - Make a soft tissue model

Apply lubricant where the soft tissue replica material is to be applied. Syringe a soft tissue replica material around the analog.



8 Lab step - Fabricate the stone model

Fabricate a working model in minimal expansion, high hardness, die stone. Articulate according to normal laboratory procedures.





notes

Direct Offices

BioHorizons USA
888-246-8338 or
205-967-7880

BioHorizons Canada
866-468-8338

BioHorizons Spain
+34 91 713 10 84

BioHorizons UK
+44 (0)1344 752560

BioHorizons Germany
+49 761-556328-0

BioHorizons Chile
+56 (2) 23619519

BioHorizons Italy
800-063-040

Distributors

For contact information in our 90 countries, visit www.biohorizons.com



BioHorizons®, Laser-Lok®, MinerOss®, AutoTac®, Mem-Lok® and TeethXpress® are registered trademarks of BioHorizons. Unigrip™ is a trademark of Nobel Biocare AB. Zimmer® Dental ScrewVent® and Tapered ScrewVent® are registered trademarks of Zimmer, Inc. AlloDerm® and AlloDerm GBR® are registered trademarks of LifeCell Corporation. Grafton® DBM is a registered trademark of Medtronic, Inc. Spiralock® is a registered trademark of Spiralock Corporation. Pomalux® is a registered trademark of Westlake Plastics Co. Locator® is a registered trademark of Zest Anchors, Inc. Delrin® is a registered trademark of E.I. du Pont de Nemours and Company. Bio-Gide® is a registered trademark of Edward Geistlich Sohne AG Fur Chemische Industrie. Not all products shown or described in this literature are available in all countries. As applicable, BioHorizons products are cleared for sale in the European Union under the EU Medical Device Directive 93/42/EEC and the tissues and cells Directive 2004/23/EC. We are proud to be registered to ISO 13485:2003, the international quality management system standard for medical devices, which supports and maintains our product licences with Health Canada and in other markets around the globe. Original language is English. ©BioHorizons. All Rights Reserved.

This prosthetic technique module may contain references to the complete Prosthetic Manual (L02015).

To download the full Prosthetic Manual, please visit www.biohorizons.com



Made in
the USA

shop online at
store.biohorizons.com