

introduction to BioHorizons prosthetics

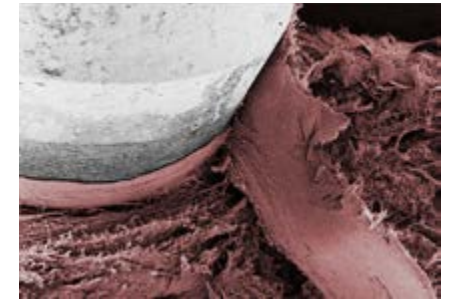
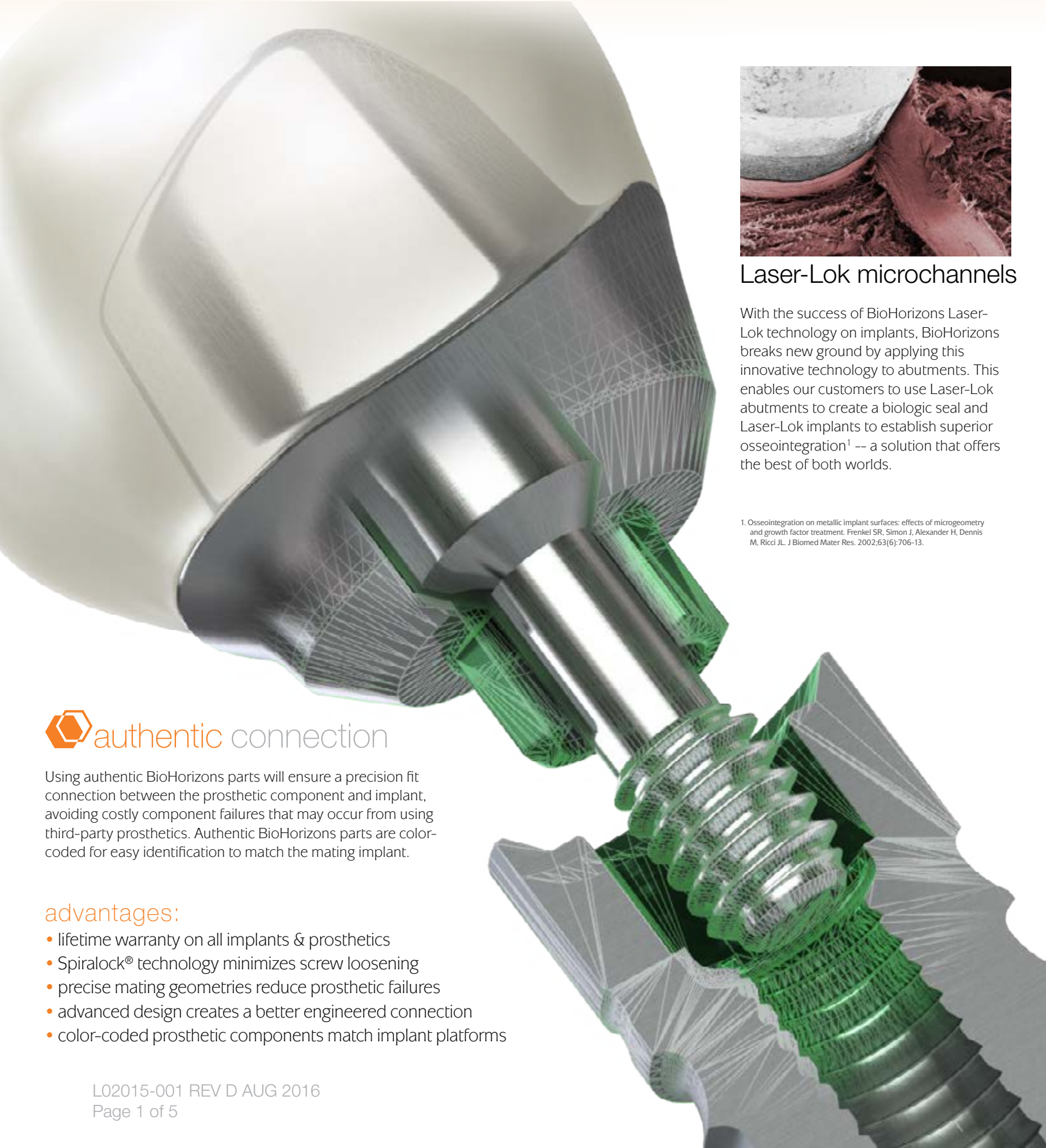


BIOHORIZONS[®]
SCIENCE • INNOVATION • SERVICE



why choose BioHorizons prosthetics?

BioHorizons offers a broad array of abutments for a wide range of restorative applications and individual needs including the versatile 3inOne abutment, the game-changing Laser-Lok abutments as well as the comprehensive Multi-unit abutment system.



Laser-Lok microchannels

With the success of BioHorizons Laser-Lok technology on implants, BioHorizons breaks new ground by applying this innovative technology to abutments. This enables our customers to use Laser-Lok abutments to create a biologic seal and Laser-Lok implants to establish superior osseointegration¹ -- a solution that offers the best of both worlds.

1. Osseointegration on metallic implant surfaces: effects of microgeometry and growth factor treatment. Frenkel SR, Simon J, Alexander H, Dennis M, Ricci JL. J Biomed Mater Res. 2002;63(6):706-13.

authentic connection

Using authentic BioHorizons parts will ensure a precision fit connection between the prosthetic component and implant, avoiding costly component failures that may occur from using third-party prosthetics. Authentic BioHorizons parts are color-coded for easy identification to match the mating implant.

advantages:

- lifetime warranty on all implants & prosthetics
- Spiralock® technology minimizes screw loosening
- precise mating geometries reduce prosthetic failures
- advanced design creates a better engineered connection
- color-coded prosthetic components match implant platforms



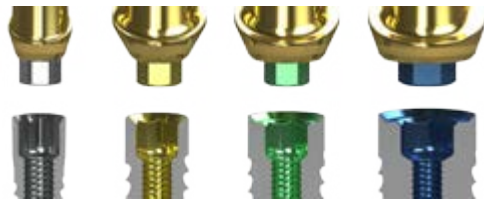
simple system identification

BioHorizons prosthetics include several features to simplify the restorative process. (1) color coding on all components; (2) laser marking on the healing abutments; and (3) emergence profile for soft tissue contour.

1 Color coding

BioHorizons prosthetic components are color coded to match the BioHorizons implant prosthetic platforms.

Note: The 3.0 implant and prosthetic components maintain their natural titanium color to distinguish them from the other diameters.



3.0mm 3.5mm 4.5mm 5.7mm

prosthetic connection

2 Laser marking

BioHorizons healing abutments are laser-marked for easy identification without having to remove them from the implant site. Laser marking describes the platform size, emergence profile, abutment height and Laser-Lok.

Prosthetic Platform

Y = Yellow (3.5mm)
G = Green (4.5mm)
B = Blue (5.7mm)

Emergence Profile

N = Narrow
R = Regular
W = Wide

Abutment Height

1, 3 or 5mm

Laser-Lok

L = Laser-Lok



*3.0 healing abutments cannot be laser-marked due to their small size.

Simple Solutions healing abutments are differentiated by a slightly different coding scheme:

Simple Solutions

S = Simple Solutions

Collar Height

0.8, 1.8 or 2.8mm

Prosthetic Platform

Y = Yellow (3.5mm)
G = Green (4.5mm)
B = Blue (5.7mm)

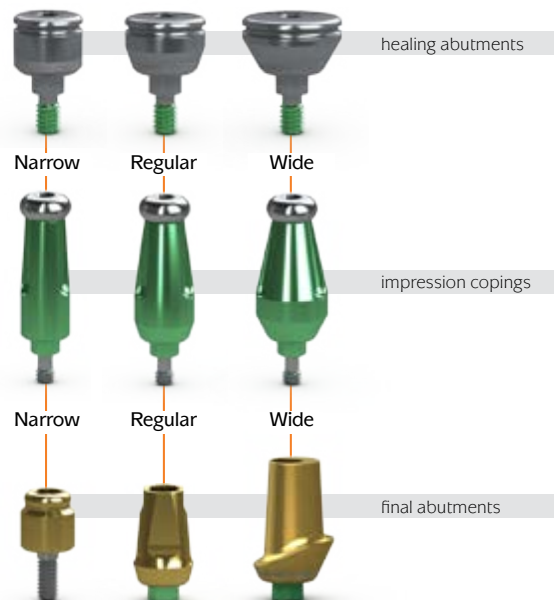
Laser-Lok

L = Laser-Lok



3 Emergence profile

It is important to use components with the same emergence profile throughout the restorative process. This will enable easy seating of prosthetic components, without soft tissue impingement, and will maximize esthetics.





abutment types



Healing abutments

BioHorizons healing abutments are offered for every implant diameter, abutment emergence and collar height. Healing abutments are color coded and laser-marked for easy identification and are available with Laser-Lok.



Temporary abutments

Temporary abutments provide options for intermediate esthetic restorations, tissue contouring, and immediate function. BioHorizons offers a wide variety of temporary abutments for both screw-retained and cement-retained restorations.



Impression copings

BioHorizons impression copings are available in different types to meet every impression making preference.



Cementable abutments

BioHorizons cementable abutments are offered in a wide variety of styles and sizes to meet the patient's site conditions.



Esthetic abutments

For anterior cases, BioHorizons esthetic abutments are designed to follow the scalloped gingiva and minimize the amount of modification. These abutments can be ordered with Laser-Lok to create a connective tissue attachment and maintain the crestal bone.



abutment types



Patient-specific abutments

For anterior cases that require a precise, customized esthetic solution, BioHorizons patient-specific abutments are the perfect choice. Offered in full titanium and hybrid zirconia, both offer the precision fit of the BioHorizons connection but are milled to accurately meet the site conditions. Custom cast abutments are also available in hexed and non hexed.



Multi-unit abutments

The BioHorizons Multi-unit abutment system provides the tools to restore even compromised edentulous cases. With a wide variety of abutment angles, collar heights and platform diameters, no system offers better options for treating patients' individual needs. The Multi-unit abutment's intelligent design and restorative flexibility is matched only by its ease of use and surgical efficiency in immediate load situations.



Simple Solutions abutments

The Simple Solutions abutments with Laser-Lok are designed to be seated at the time of implant placement and remain in place through final restoration. This simplifies the restorative process, because a single abutment is used for temporization, impression making and final restoration. Laser-Lok technology establishes and maintains connective tissue attachment.



Overdenture abutments

Overdenture abutments are often used with as few as two implants, making implant therapy affordable for many patients. Locator abutments and ball abutments are ideal for retaining dentures in both the maxilla and the mandible.



prosthetic instrumentation



Prosthetic kit

The enhanced prosthetic instrument kit contains the basic instrumentation necessary to place BioHorizons prosthetic abutments and screws. The kit has spaces available for try-in abutments and optional instrumentation such as torque wrenches.

**some instruments shown are sold separately*



Torque wrenches

Precision torque wrenches are available to meet all prosthetic applications and preferences. From simple to fully adjustable or precision automatic, BioHorizons offers a full range of choices in torque wrench design and function.



Hex drivers

BioHorizons offers a wide variety of .050" hex drivers to use for installing and removing cover caps, healing abutments and prosthetic screws.

Direct Offices

BioHorizons USA
888-246-8338 or
205-967-7880

BioHorizons Canada
866-468-8338

BioHorizons Spain
+34 91 713 10 84

BioHorizons UK
+44 (0)1344 752560

BioHorizons Germany
+49 761-556328-0

BioHorizons Chile
+56 (2) 23619519

BioHorizons Italy
800-063-040

Distributors

For contact information in our 90 countries, visit www.biohorizons.com



BioHorizons®, Laser-Lok®, MinerOss®, AutoTac®, Mem-Lok® and TeethXpress® are registered trademarks of BioHorizons. Unigrip™ is a trademark of Nobel Biocare AB. Zimmer® Dental ScrewVent® and Tapered ScrewVent® are registered trademarks of Zimmer, Inc. AlloDerm® and AlloDerm GBR® are registered trademarks of LifeCell Corporation. Grafton® DBM is a registered trademark of Medtronic, Inc. Spiralock® is a registered trademark of Spiralock Corporation. Pomalux® is a registered trademark of Westlake Plastics Co. Locator® is a registered trademark of Zest Anchors, Inc. Delrin® is a registered trademark of E.I. du Pont de Nemours and Company. Bio-Gide® is a registered trademark of Edward Geistlich Sohne AG Fur Chemische Industrie. Not all products shown or described in this literature are available in all countries. As applicable, BioHorizons products are cleared for sale in the European Union under the EU Medical Device Directive 93/42/EEC and the tissues and cells Directive 2004/23/EC. We are proud to be registered to ISO 13485:2003, the international quality management system standard for medical devices, which supports and maintains our product licences with Health Canada and in other markets around the globe. Original language is English. ©BioHorizons. All Rights Reserved.

This prosthetic technique module may contain references to the complete Prosthetic Manual (L02015).

To download the full Prosthetic Manual, please visit www.biohorizons.com



Made in
the USA

shop online at
store.biohorizons.com