

OD Secure™ chairside pick-up using existing denture



BIOHORIZONS®
SCIENCE • INNOVATION • SERVICE



OD Secure chairside pick-up using existing denture

Use this technique for chairside pick-up of the OD Secure housing into an existing denture. OD Secure abutments are designed for use with overdentures or partial dentures retained in whole or in part by dental implants in the mandible or maxilla. They offer multiple levels of retention and low vertical profile.



component options

- OD Secure abutment kit
- OD Secure extraction tool
- OD Secure insertion tool
- torque wrench

1 Select the OD Secure abutments

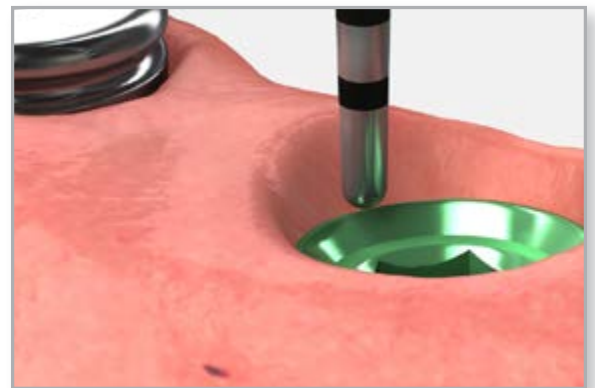
Select the proper OD Secure abutment based on the prosthetic platform and the tissue height. Measure the tissue thickness from the top of the implant to the crest of the gingiva at its highest point.

Choose the abutment cuff height that exactly equals the tissue height or is slightly taller. This will place the OD Secure connection 1.5mm above the tissue and allow the housing cap to seat completely.



Note:

Due to tissue depth variations, the abutment heights you choose may vary.



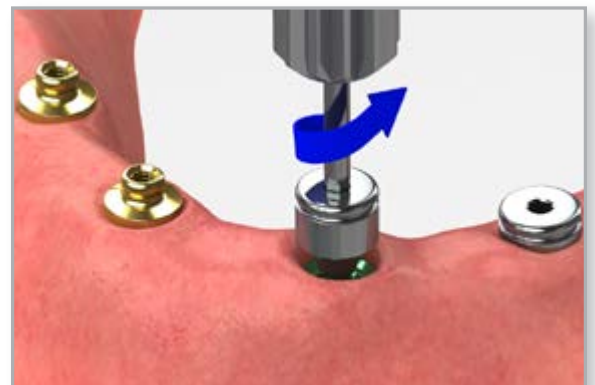
2 Remove the healing abutments

Remove the healing abutments using an .050" (1.25mm) hex driver. Confirm that the prosthetic platforms are free of bone debris and soft tissue. Irrigate the internal connection of the implants and dry.



Helpful Hint:

When working with multiple implants, remove one healing abutment at a time and replace it immediately with a OD Secure abutment. This helps to prevent the possibility of soft tissue collapsing onto the implant.





OD Secure chairside pick-up using existing denture

3 Place the OD Secure abutments

Place the OD Secure abutment onto each implant using an .050" (1.25mm) hex driver. Hand tighten.

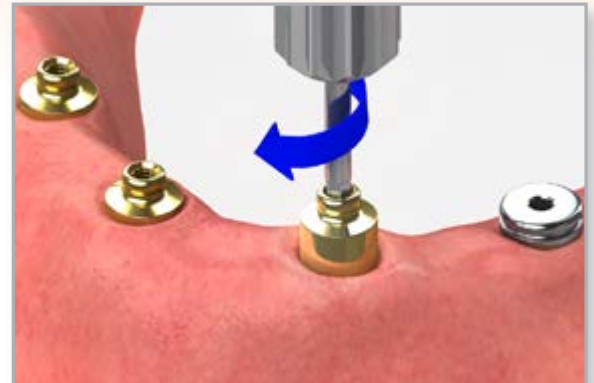
Take a radiograph along the long axis of the implants to ensure the abutments are seated completely onto the implants.



Note:

The X-ray tube must be positioned perpendicular to the implant prosthetic platform.

Tighten each OD Secure abutment to 30 Ncm using a calibrated torque wrench and an .050" (1.25mm) hex driver.



4 Place the block-out spacers and housing caps

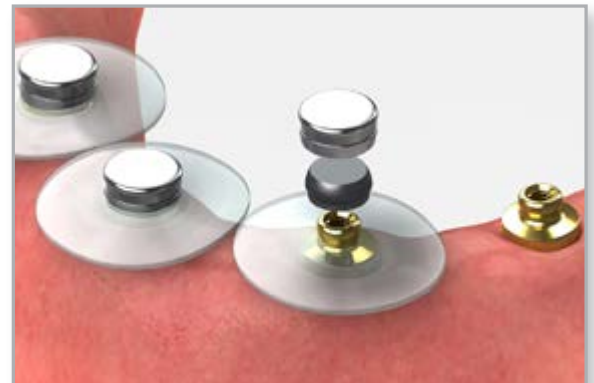
Place a block-out spacer over the head of each OD Secure abutment. This blocks out the area immediately surrounding the abutment allowing the full resilient function of the pivoting metal housing cap over the OD Secure connection.

Place a OD Secure housing cap with a black lab processing insert onto each OD Secure abutment.



Note:

If the block-out spacer does not completely fill the space between the tissue and the metal housing cap, block out any remaining undercuts with a material of choice to prevent the acrylic resin from locking the denture onto the abutment.

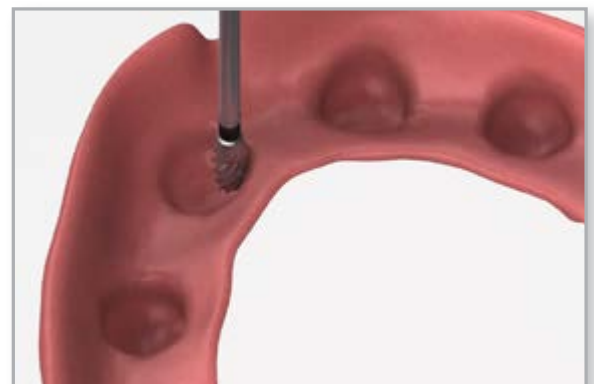


5 Modify the denture

Place a transferable mark on the top of each OD Secure abutment with an indelible pencil and seat the denture to determine the ideal location for the housing caps in the denture.

Prepare recesses in the denture to accommodate the protruding OD Secure abutments. There must be no contact between the denture and the housing caps. If the denture rests on the housing cap, excess pressure on the implant will result.

Make lingual vent holes for the escape of any excess acrylic.



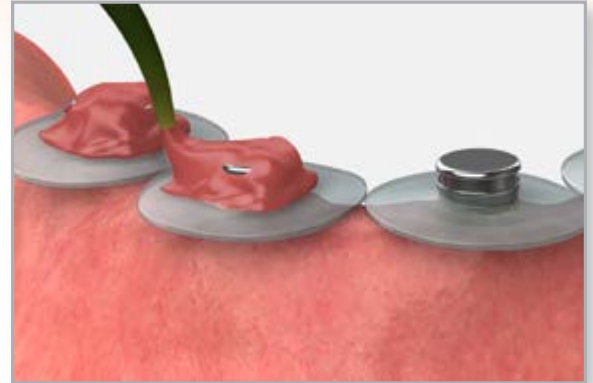


OD Secure chairside pick-up using existing denture

6 Apply the acrylic

Use either a chairside light cure acrylic resin or a permanent self-curing acrylic to bond the housing caps to the denture.

Place a small amount of a material of choice into the recessed area of the denture and around the denture caps.



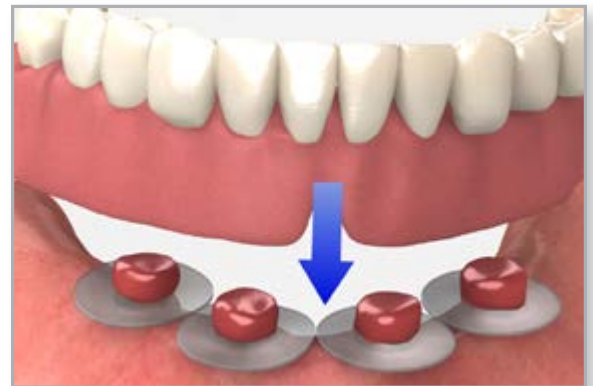
7 Seat the denture

Insert the denture. Guide the patient into occlusion, maintaining a proper relationship with the opposing arch.

Maintain the denture in a passive position without compressing the soft tissue while the denture material sets.



Important: Excessive occlusal pressure during the setting time may cause tissue recoil against the denture base and could contribute to dislodging and wear of the nylon male.



8 Remove the denture

After the acrylic has cured, remove the denture. Fill in any voids with acrylic and remove excess acrylic from around the housing cap and the lingual vent-hole. Polish before changing to the final retentive cap insert.



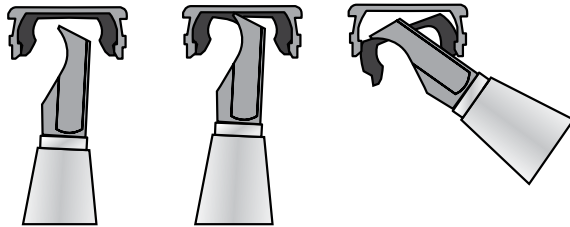


OD Secure chairside pick-up using existing denture

9 Remove the black insert

Use the OD Secure removal tool to remove the black lab processing insert from the metal housing cap.

Insert the OD Secure cap extractor tool into the cap assembly and pull the insert out.



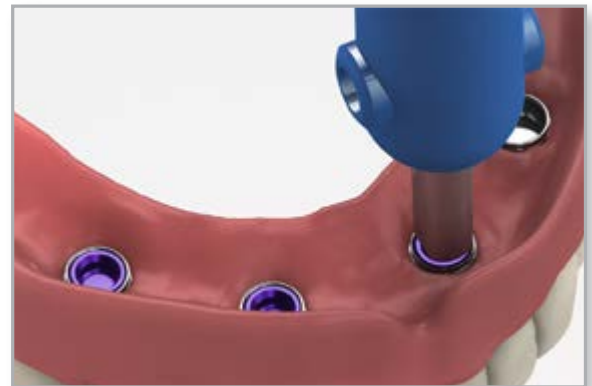
10 Place the male retention insert

Use the OD Secure cap insert tool to firmly push a retention cap insert into the housing cap. The retention insert must seat securely into place, level with the rim of the cap.



Note:

The OD Secure cap insert tool does not retain the replacement retention cap insert. It is best to hold the denture with the occlusal side down and snap the retention insert into the metal cap.



11 Deliver the denture

Remove the provisional prosthesis and seat the overdenture onto the OD Secure abutments. Modify the occlusion and the tissue side of the denture as necessary and polish after making adjustments.

Verify the patient's ability to remove and seat the denture properly. If the denture has too much or too little retention, select an insert with different retention.

Instruct the patient on the proper insertion and removal of the prosthesis. This includes inserting the denture using their fingers and not biting the denture in to place. When removing the denture, it should be lifted as evenly as possible.





notes

Direct Offices

BioHorizons USA
888-246-8338 or
205-967-7880

BioHorizons Canada
866-468-8338

BioHorizons Spain
+34 91 713 10 84

BioHorizons UK
+44 (0)1344 752560

BioHorizons Germany
+49 761-556328-0

BioHorizons Chile
+56 (2) 23619519

BioHorizons Italy
800-063-040

Distributors

For contact information in our 90 countries, visit www.biohorizons.com



BioHorizons®, Laser-Lok®, MinerOss®, AutoTac®, Mem-Lok® and TeethXpress® are registered trademarks of BioHorizons. Unigrip™ is a trademark of Nobel Biocare AB. Zimmer® Dental ScrewVent® and Tapered ScrewVent® are registered trademarks of Zimmer, Inc. AlloDerm® and AlloDerm GBR® are registered trademarks of LifeCell Corporation. Grafton® DBM is a registered trademark of Medtronic, Inc. Spiralock® is a registered trademark of Spiralock Corporation. Pomalux® is a registered trademark of Westlake Plastics Co. Locator® is a registered trademark of Zest Anchors, Inc. Delrin® is a registered trademark of E.I. du Pont de Nemours and Company. Bio-Gide® is a registered trademark of Edward Geistlich Sohne AG Fur Chemische Industrie. Not all products shown or described in this literature are available in all countries. As applicable, BioHorizons products are cleared for sale in the European Union under the EU Medical Device Directive 93/42/EEC and the tissues and cells Directive 2004/23/EC. We are proud to be registered to ISO 13485:2003, the international quality management system standard for medical devices, which supports and maintains our product licences with Health Canada and in other markets around the globe. Original language is English. ©BioHorizons. All Rights Reserved.

This prosthetic technique module may contain references to the complete Prosthetic Manual (L02015).

To download the full Prosthetic Manual, please visit www.biohorizons.com



Made in
the USA

shop online at
store.biohorizons.com