

Locator[®] abutment impression technique



BIOHORIZONS[®]
SCIENCE • INNOVATION • SERVICE



Locator abutment impression technique

Use this technique to make a full-arch impression of Locator abutments. This impression will be used to fabricate a new denture with Locator denture caps processed in the denture. Locator implant abutments are designed for use with overdentures or partial dentures retained in whole or in part by dental implants in the mandible or maxilla. Locator abutments are available in a variety of cuff heights for all of the internal implant platform sizes from 3.0mm to 5.7mm.



Note: Abutment cuff height should be selected to match the height of the gingival tissue. This will place the Locator connection 1.8mm above the tissue and allow the Locator male to seat completely.



Important: Always measure the tissue at the highest point when selecting the appropriate Locator abutment cuff height.

component options



- Locator abutments
- Locator core tool
- Locator impression copings
- Locator female analogs
- Locator abutment holders
- square drive tool
- .050" (1.25mm) hex driver
- torque wrench
- male processing package

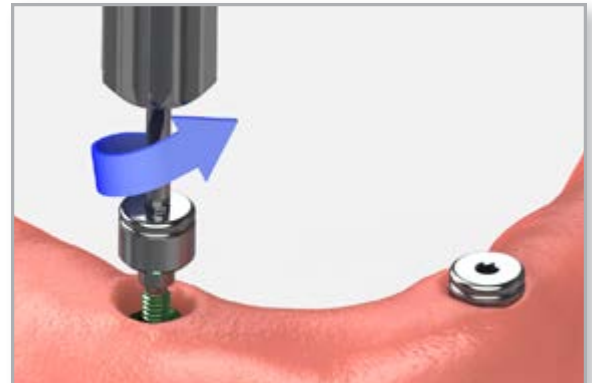
1 Remove the healing abutments

Remove the healing abutments using an .050" (1.25mm) hex driver. Confirm that the prosthetic platforms are free of any bone debris or soft tissue. Irrigate the internal connection of the implants and dry.

Helpful Hint:



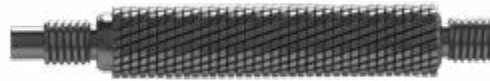
When working with multiple implants, remove one healing abutment at a time, replacing it immediately with a Locator abutment. This prevents the possibility of soft tissue collapsing onto the implant.



Locator core tool instructions



Male retention insert removal tool
For removing the male retention inserts from the metal housing



Male retention insert tool
For placing the male retention inserts into the metal housing



Hand driver
For hand tightening the Locator abutment



Locator abutment holder
For retaining and delivering the Locator abutment using the hand driver portion of the core tool.



Locator abutment impression technique

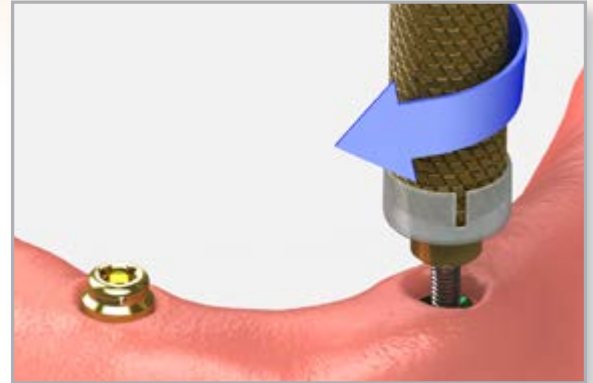
2 Place the abutments

Place the Locator abutment onto each implant using the Locator hand driver with a Locator abutment holder. Hand tighten.

Take a radiograph along the long axis of the implants to ensure the abutments are seated completely onto the implant.

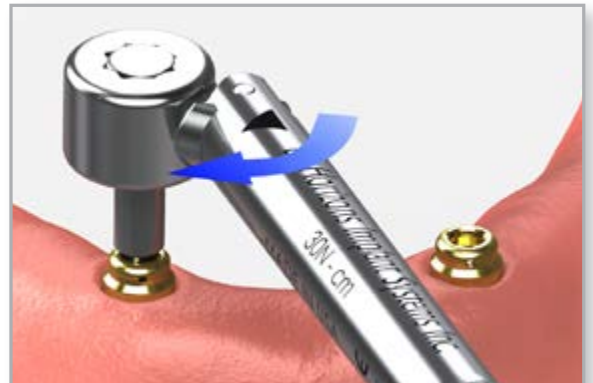


Note:
The X-ray tube must be positioned perpendicular to the implant prosthetic platform.



3 Tighten the abutments

Tighten each Locator abutment to 30 Ncm using a calibrated torque wrench and a Locator square drive tool. Alternatively, use an .050" (1.25mm) hex driver inserted into the core tool hand driver.



4 Place the impression copings

Snap an impression coping onto each Locator abutment.





Locator abutment impression technique

5 Make a full-arch impression

Syringe a medium or heavy-bodied elastomeric impression material around the impression copings. Make an impression to pick-up the impression copings and to record all soft tissue contours for the new denture fabrication. The impression copings will remain in the impression when it is removed.



Note:
If a reline impression of an existing denture is being made, relieve the denture to accommodate the height of the Locator abutments and impression copings and proceed with steps 1 through 5.



6 Modify the existing denture

Relieve the existing denture to accommodate the height of the Locator abutments. A soft liner may be used to reline the denture and provide a limited degree of retention while the new denture is fabricated.

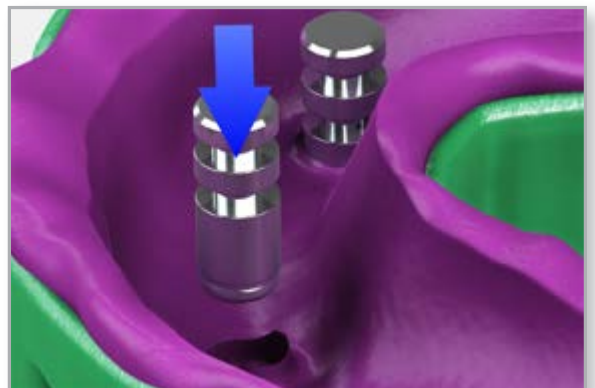


send to lab

- impression with impression copings imbedded
- Locator female analogs
- male processing packages
- bite registration
- opposing model or impression
- prescription with lab instructions

7 Lab step - Seat the analogs

Insert the Locator female analogs in the corresponding location in the impression.





Locator abutment impression technique

8 Lab step - Fabricate the stone model

Fabricate a working model and articulate according to normal laboratory procedures.



Direct Offices

BioHorizons USA
888-246-8338 or
205-967-7880

BioHorizons Canada
866-468-8338

BioHorizons Spain
+34 91 713 10 84

BioHorizons UK
+44 (0)1344 752560

BioHorizons Germany
+49 761-556328-0

BioHorizons Chile
+56 (2) 23619519

BioHorizons Italy
800-063-040

Distributors

For contact information in our 90 countries, visit www.biohorizons.com



BioHorizons®, Laser-Lok®, MinerOss®, AutoTac®, Mem-Lok® and TeethXpress® are registered trademarks of BioHorizons. Unigrip™ is a trademark of Nobel Biocare AB. Zimmer® Dental ScrewVent® and Tapered ScrewVent® are registered trademarks of Zimmer, Inc. AlloDerm® and AlloDerm GBR® are registered trademarks of LifeCell Corporation. Grafton® DBM is a registered trademark of Medtronic, Inc. Spiralock® is a registered trademark of Spiralock Corporation. Pomalux® is a registered trademark of Westlake Plastics Co. Locator® is a registered trademark of Zest Anchors, Inc. Delrin® is a registered trademark of E.I. du Pont de Nemours and Company. Bio-Gide® is a registered trademark of Edward Geistlich Sohne AG Fur Chemische Industrie. Not all products shown or described in this literature are available in all countries. As applicable, BioHorizons products are cleared for sale in the European Union under the EU Medical Device Directive 93/42/EEC and the tissues and cells Directive 2004/23/EC. We are proud to be registered to ISO 13485:2003, the international quality management system standard for medical devices, which supports and maintains our product licences with Health Canada and in other markets around the globe. Original language is English. ©BioHorizons. All Rights Reserved.

This prosthetic technique module may contain references to the complete Prosthetic Manual (L02015).

To download the full Prosthetic Manual, please visit www.biohorizons.com



Made in
the USA

shop online at
store.biohorizons.com