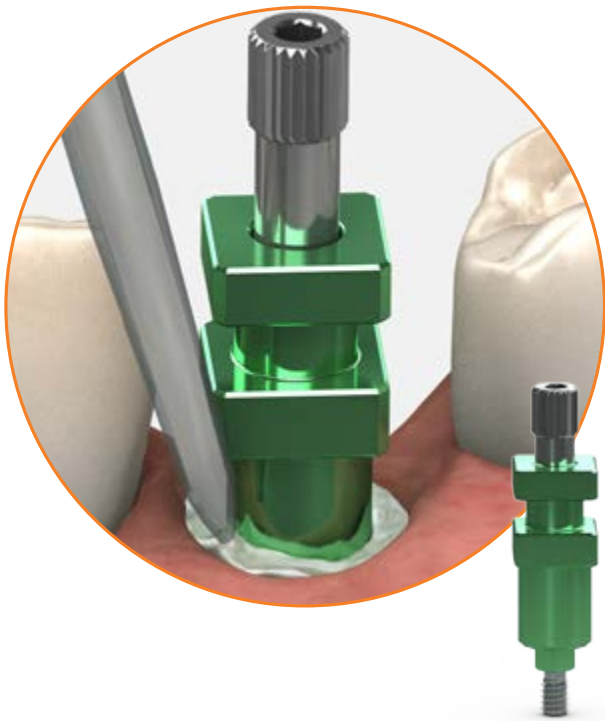


fabricating a custom impression coping using the open tray technique



BIOHORIZONS[®]
SCIENCE • INNOVATION • SERVICE



fabricating a custom impression coping using the open tray technique

Use this technique to fabricate a customized open-tray direct pick-up* impression coping that transfers the soft tissue contour developed by a temporary restoration. This procedure will provide a model representing the position of the implant and hex orientation as well as the soft tissue contour.

*The impression may be made using a modified stock impression tray or a custom impression tray. Modify a stock impression tray by making a hole in the occlusal surface of the tray in the same position as the implant. See the [custom impression tray fabrication](#) module.

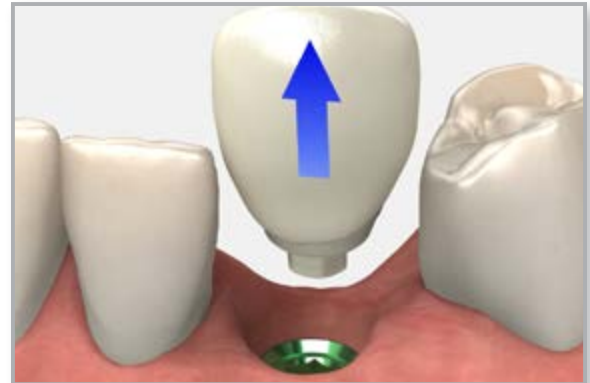


component options

- direct pick-up, hexed, narrow coping
- implant analog
- .050" (1.25mm) hex driver

1 Remove the temporary

Remove the temporary prosthesis. Confirm the prosthetic platform is free of any bone debris or soft tissue.



2 Place the impression coping

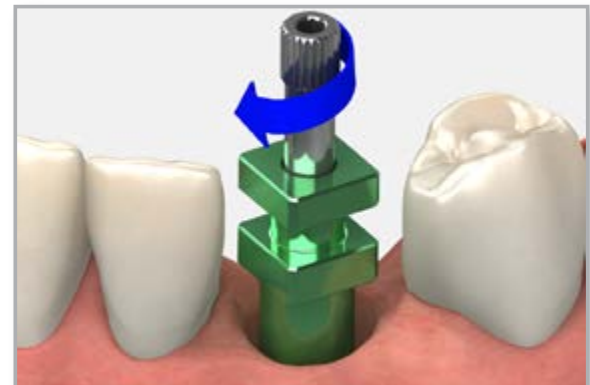
Place composite adhesive on a narrow emergence direct pick-up impression coping in the anticipated emergence profile area and light cure.

Seat the impression coping onto the implant using a direct pick-up coping screw. Hand tighten.

Take a radiograph along the long axis of the implant to ensure that the impression coping is seated completely onto the implant.

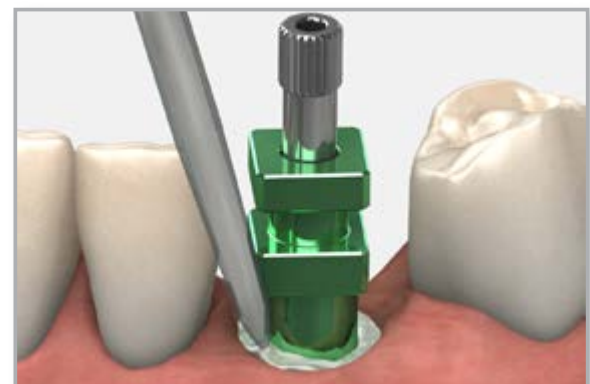


Note:
The X-ray tube must be positioned perpendicular to the implant prosthetic platform.



3 Inject and cure the composite

Inject a flowable light cure composite around the impression coping filling the contoured sulcus. Light cure the composite.





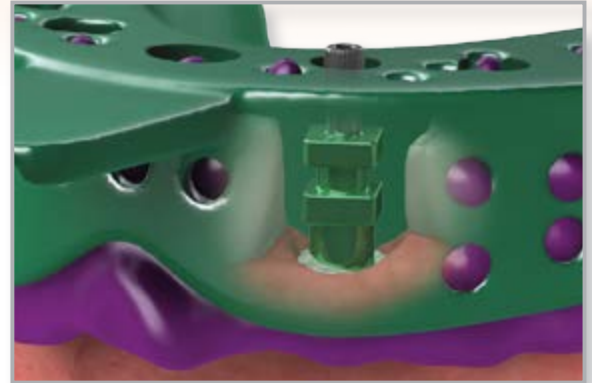
fabricating a custom impression coping using the open tray technique

4 Make a full-arch impression

Try in the custom impression tray or modified stock tray to verify that the coping screw protrudes through the access hole without interference.

Syringe a medium or heavy body elastomeric impression material around the custom impression coping body, leaving the screw exposed. Load the tray with impression material and make the impression.

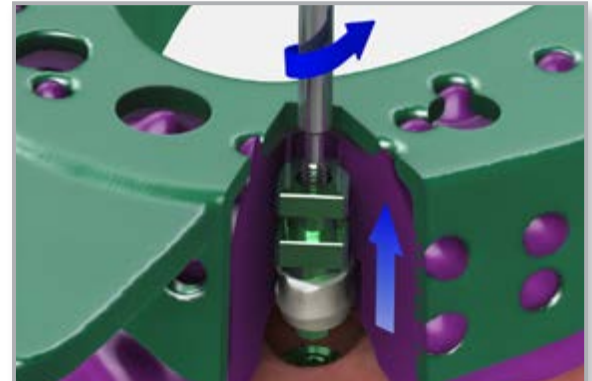
Before the material sets, use your finger to wipe the impression material from the top of the screws so they are exposed for access.



5 Remove the coping screw & impression

After the impression material has set, remove the coping screw by hand or by using an .050" (1.25mm) hex driver and remove the tray from the mouth. Verify that the impression material is completely adapted around the customized pick-up coping.

Replace the temporary prosthesis immediately to prevent the possibility of soft tissue collapsing onto the implant.

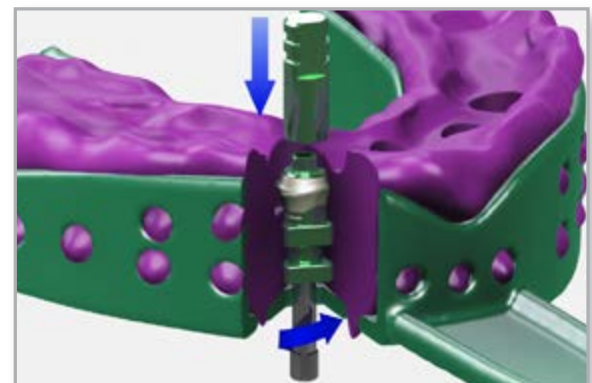


send to lab

- impression with coping inside
- coping screw
- implant analog
- bite registration
- opposing model or impression
- prescription with lab instructions

6 Lab step - Attach the analog

Attach the appropriate diameter implant analog to the customized direct pick-up coping in the impression and insert the coping screw through the access hole in the impression tray. Hand tighten.

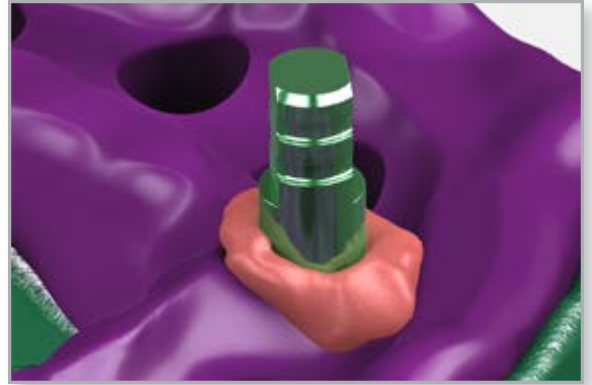




fabricating a custom impression coping using the open tray technique

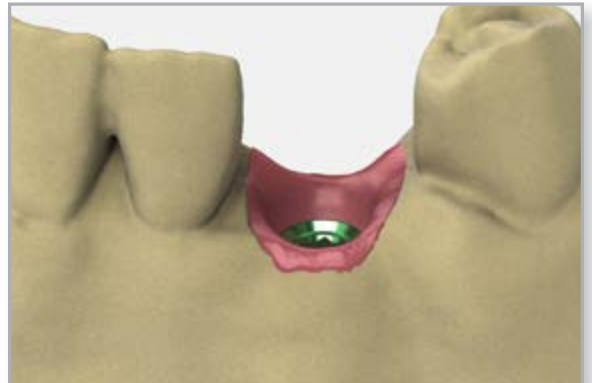
7 Lab step - Make a soft tissue model

Verify the coping and analog are properly connected. Apply lubricant where the soft tissue replica material is to be applied. Syringe a soft tissue replica material around the analog.



8 Lab step - Fabricate the stone model

Fabricate a working model in minimal expansion, high hardness, die stone. Articulate according to normal laboratory procedures.



Direct Offices

BioHorizons USA
888-246-8338 or
205-967-7880

BioHorizons Canada
866-468-8338

BioHorizons Spain
+34 91 713 10 84

BioHorizons UK
+44 (0)1344 752560

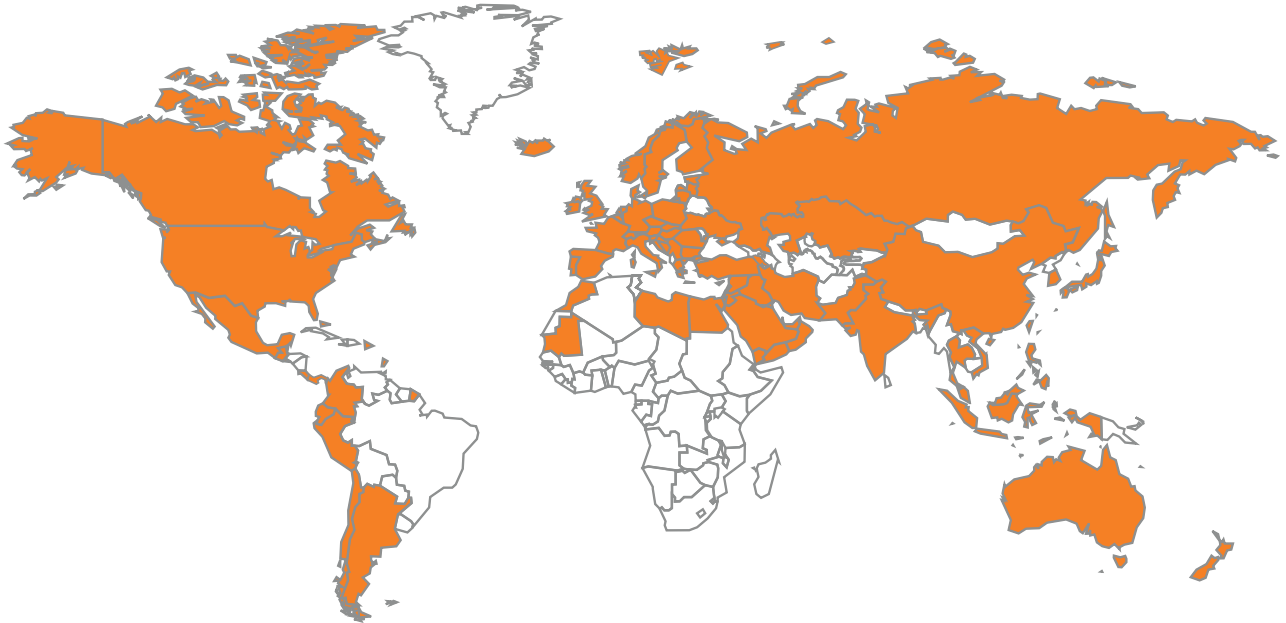
BioHorizons Germany
+49 761-556328-0

BioHorizons Chile
+56 (2) 23619519

BioHorizons Italy
800-063-040

Distributors

For contact information in our 90 countries, visit www.biohorizons.com



BioHorizons®, Laser-Lok®, MinerOss®, AutoTac®, Mem-Lok® and TeethXpress® are registered trademarks of BioHorizons. Unigrip™ is a trademark of Nobel Biocare AB. Zimmer® Dental ScrewVent® and Tapered ScrewVent® are registered trademarks of Zimmer, Inc. AlloDerm® and AlloDerm GBR® are registered trademarks of LifeCell Corporation. Grafton® DBM is a registered trademark of Medtronic, Inc. Spiralock® is a registered trademark of Spiralock Corporation. Pomalux® is a registered trademark of Westlake Plastics Co. Locator® is a registered trademark of Zest Anchors, Inc. Delrin® is a registered trademark of E.I. du Pont de Nemours and Company. Bio-Gide® is a registered trademark of Edward Geistlich Sohne AG Fur Chemische Industrie. Not all products shown or described in this literature are available in all countries. As applicable, BioHorizons products are cleared for sale in the European Union under the EU Medical Device Directive 93/42/EEC and the tissues and cells Directive 2004/23/EC. We are proud to be registered to ISO 13485:2003, the international quality management system standard for medical devices, which supports and maintains our product licences with Health Canada and in other markets around the globe. Original language is English. ©BioHorizons. All Rights Reserved.

This prosthetic technique module may contain references to the complete Prosthetic Manual (L02015).

To download the full Prosthetic Manual, please visit www.biohorizons.com



Made in
the USA

shop online at
store.biohorizons.com