

closed tray technique using the indirect transfer coping



BIOHORIZONS[®]
SCIENCE • INNOVATION • SERVICE



closed tray technique using the indirect transfer coping

Use this technique to make a single or multiple-unit, implant-level impression for fabrication of a working cast utilizing a closed-tray, indirect transfer method. Choose the emergence that matches the emergence of the healing abutment (narrow, regular or wide). This procedure creates a model that represents the exact position of the implant and the orientation of the hex and the soft tissue profile.



component options

- indirect scoop coping
- 3inOne abutment
- ball-top screw
- implant analog
- .050" (1.25mm) hex driver

1 Remove the healing abutment

Remove the healing abutment using an .050" (1.25mm) hex driver. Confirm the implant prosthetic platform is free of any bone debris or soft tissue.



Note:

The emergence of the impression coping should match the emergence of the healing abutment and the intended final abutment (narrow, regular or wide). If a custom cast abutment is planned, the final abutment emergence will be determined by the lab.



Helpful Hint:

When placing impression copings on multiple implants, remove one healing abutment at a time, replacing it immediately with the impression coping. This reduces the likelihood of soft tissue collapsing onto the implant. Work from the posterior to the anterior.



Important:

When a Laser-Lok healing abutment is temporarily removed for impression making or other restorative procedures, keep the removed Laser-Lok healing abutment in sterile saline until reinserting into the site.



2 Place the impression coping

Option A - Seat the indirect scoop coping and secure using the included screw. Hand tighten.

Option B - Seat the 3inOne abutment and secure using the ball-top screw. Hand tighten.

Take a radiograph along the long axis of the implant to ensure that the impression coping or 3inOne abutment is seated completely into the hex of the implant.



Note:

The X-ray tube must be positioned perpendicular to the implant prosthetic platform.





closed tray technique using the indirect transfer coping

3 Block out the hex

Block out the hex hole on top of the indirect scoop coping screw or the ball top screw using a material of choice.

4 Make a full-arch impression

Syringe a medium or heavy body elastomeric impression material around and over the indirect scoop coping or the 3inOne abutment and ball top assembly. Load the tray with impression material and make the impression.

After the impression material has set, remove the tray from the mouth. The indirect scoop coping or 3inOne abutment/ball top screw will remain in the mouth.

5 Remove the impression copings

Remove the indirect scoop coping or 3inOne abutment/ball-top screw assembly and replace the healing abutment immediately to prevent soft tissue collapse over the implant.



Helpful Hint:

When removing impression copings on multiple implants, remove one at a time, replacing it immediately with a healing abutment. This reduces the likelihood of soft tissue collapse over the implant. Work from the anterior to posterior.

send to lab

- impression
- impression coping
 - indirect scoop coping with retaining screw
 - 3inOne abutment with ball top screw
- bite registration
- opposing model or impression
- implant analog
- prescription with lab instructions



Note:

If the 3inOne abutment is to be used as the final abutment, send the abutment screw that came with the 3inOne abutment to the lab.





closed tray technique using the indirect transfer coping

6 Lab step - Assemble the analog

Option A - Attach the indirect scoop coping using the appropriate diameter implant analog using the coping screw.

Option B - Attach the 3inOne abutment using the appropriate diameter implant analog using the ball-top screw.

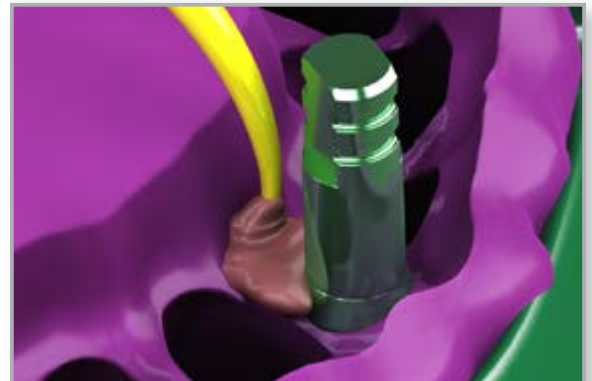
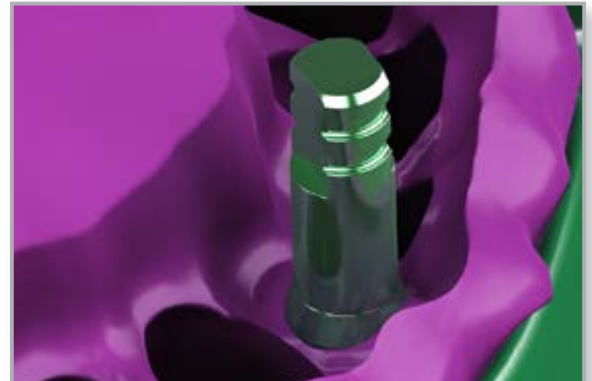


7 Lab step - Index the copings

Index the coping into the impression by inserting the coping assembly into the corresponding location in the impression.

Option A - orient the indirect scoop coping using the corresponding indices in the impression.

Option B - orient the 3inOne abutment using the long flat.

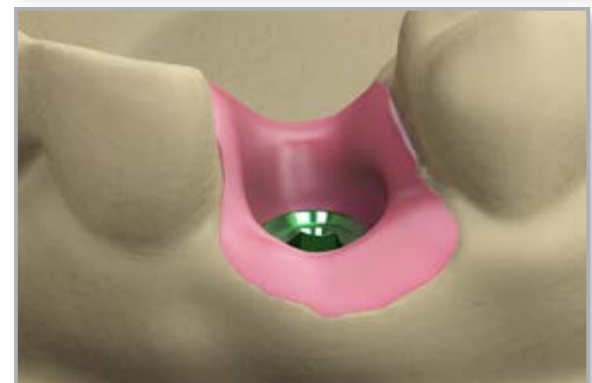


8 Lab step - Make a soft tissue model

Verify that the coping and analog assembly is seated properly and completely. Apply lubricant where the soft tissue replica material is to be applied. Syringe a soft tissue replica material around the analog.

9 Lab step - Fabricate the stone model

Fabricate a working model in minimal expansion, high hardness die stone. Articulate according to normal laboratory procedures.



Direct Offices

BioHorizons USA
888-246-8338 or
205-967-7880

BioHorizons Canada
866-468-8338

BioHorizons Spain
+34 91 713 10 84

BioHorizons UK
+44 (0)1344 752560

BioHorizons Germany
+49 761-556328-0

BioHorizons Chile
+56 (2) 23619519

BioHorizons Italy
800-063-040

Distributors

For contact information in our 90 countries, visit www.biohorizons.com



BioHorizons®, Laser-Lok®, MinerOss®, AutoTac®, Mem-Lok® and TeethXpress® are registered trademarks of BioHorizons. Unigrip™ is a trademark of Nobel Biocare AB. Zimmer® Dental ScrewVent® and Tapered ScrewVent® are registered trademarks of Zimmer, Inc. AlloDerm® and AlloDerm GBR® are registered trademarks of LifeCell Corporation. Grafton® DBM is a registered trademark of Medtronic, Inc. Spiralock® is a registered trademark of Spiralock Corporation. Pomalux® is a registered trademark of Westlake Plastics Co. Locator® is a registered trademark of Zest Anchors, Inc. Delrin® is a registered trademark of E.I. du Pont de Nemours and Company. Bio-Gide® is a registered trademark of Edward Geistlich Sohne AG Fur Chemische Industrie. Not all products shown or described in this literature are available in all countries. As applicable, BioHorizons products are cleared for sale in the European Union under the EU Medical Device Directive 93/42/EEC and the tissues and cells Directive 2004/23/EC. We are proud to be registered to ISO 13485:2003, the international quality management system standard for medical devices, which supports and maintains our product licences with Health Canada and in other markets around the globe. Original language is English. ©BioHorizons. All Rights Reserved.

This prosthetic technique module may contain references to the complete Prosthetic Manual (L02015).

To download the full Prosthetic Manual, please visit www.biohorizons.com



Made in
the USA

shop online at
store.biohorizons.com